

# Charles Wall and Pole Mount Kit

## 97-RLWALLMNTKT

### General Description and Installation

<b>1. GENERAL INTRODUCTION .....</b>	<b>1</b>
1.1. Document Purpose .....	1
1.2. Product Purpose.....	1
<b>2. INSTALLATION .....</b>	<b>2</b>
2.1. Inspecting the Product.....	2
2.2. Following and Using Safety Precautions.....	2
2.3. Obtaining Tools and Equipment.....	2
2.4. Mounting the Kit.....	2
<b>3. TECHNICAL ASSISTANCE AND REPAIR SERVICE.....</b>	<b>5</b>
<b>4. WARRANTY &amp; CUSTOMER SERVICE .....</b>	<b>5</b>
<b>5. SPECIFICATIONS.....</b>	<b>5</b>

## 1. GENERAL INTRODUCTION

### 1.1. Document Purpose

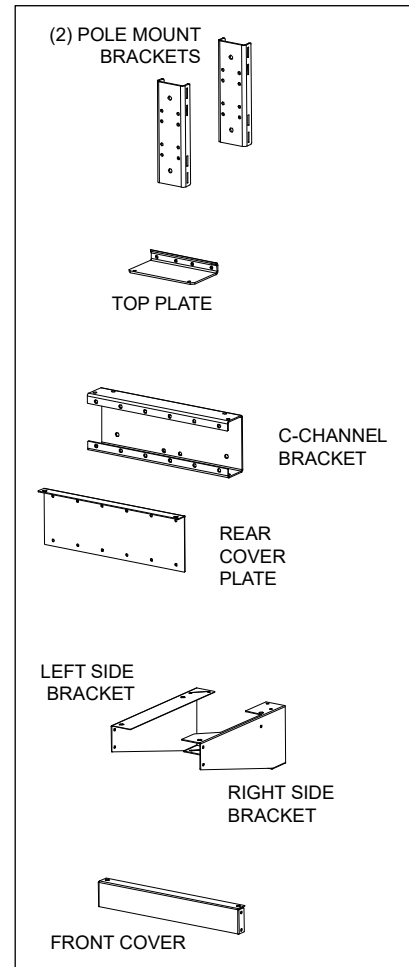
This document provides general information for the 97-RLWALLMNTKT wall and pole mounting kit for the CUBE-RL22021 enclosure Figure 1 shows the kit components. Mounting hardware is not shown.

-NOTE-

*Hereafter, the 97-RLWALLMNTKT wall and pole mounting kit will be referred to as the "kit." The CUBE-RL22021 enclosure will be referred to as the "CUBE."*

### 1.2. Product Purpose

The kit is used to mount the CUBE on a wall or pole. Brackets must be assembled in the field.



**Figure 1 Kit Components**

## 2. INSTALLATION

### 2.1. Inspecting the Product

The kit is shipped in a carton. Unpack the unit and dispose of the packaging material.

*-INSPECTION NOTE-*

*Visually inspect the unit for damages prior to installation. If the equipment was damaged in transit, immediately report the extent of the damage to the transportation company.*

### 2.2. Following and Using Safety Precautions

Read the following site and safety tips, cautions, and warnings, then proceed with the paragraphs that follow.

- Read all instructions, warnings and cautions on the equipment and in the documentation shipped with the product.
- Do not place this product on weak or unstable surfaces which may allow the product to fall, resulting in potentially serious damage(s) to persons or product.
- Only authorized trained personnel shall install the kit.

### 2.3. Obtaining Tools and Equipment

Obtain the following recommended or needed items for installing the kit.

- Protective and/or insulated work gloves
- Safety glasses
- Any exterior cable strain relief, per company practice
- Slotted, hex, and Phillips screwdrivers
- Torque wrench
- Level
- Pole mounting straps or carriage bolts with washers and nuts (corrosion resistant, size depends on pole diameter)

### 2.4. Mounting the Kit

Most assembly steps in this section apply to both wall and pole mounting. Differences between the two procedures are noted.

Except where noted, hardware is supplied with the kit.

#### 2.4.1. Torque Requirements

Torque all hardware as shown below (unless otherwise noted). These values apply to SAE Grade 1 & 2 Low Carbon Steel, ASTM A307 Low Carbon Steel, and Stainless Steel Grade 18-8.

Thread Size	In-lbs	Ft-lbs
4-40	4±10%	
6-32	8±10%	
8-32	16±10%	
10-32	26±10%	
12-24	50±10%	
1/4-20/M6	60±5%	5±5%
5/16-18	125±5%	10.4±5%
3/8-16	180±5%	15.0±5%
1/2-13	500±2%	41.7±2%
5/8-11	1000±1%	83.3±1%

**2.4.2. Prepare the CUBE**

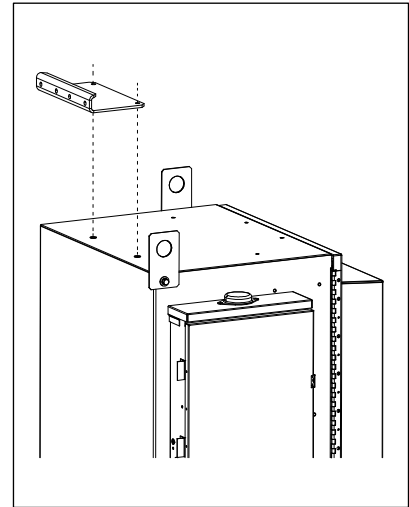
Install the top plate on top of the CUBE (Figure 2). Secure the plate using two 3/8-16 screws with lock washers and flat washers.

**2.4.3. Build Lower Assembly**

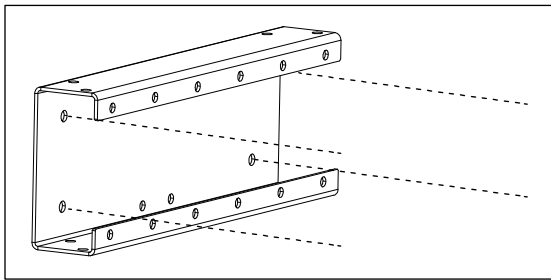
1. If wall mounting, then mount the C-channel bracket onto the wall in the mounting location (Figure 2).

Charles recommends using a minimum SAE Grade 2, corrosion-resistant, 3/8" diameter bolts, washers and nuts for wall mounting. A minimum of 3/4" thick plywood or similar surface is required. Bolts need to be of sufficient length for the wall. Ensure that the C-channel bracket is level.

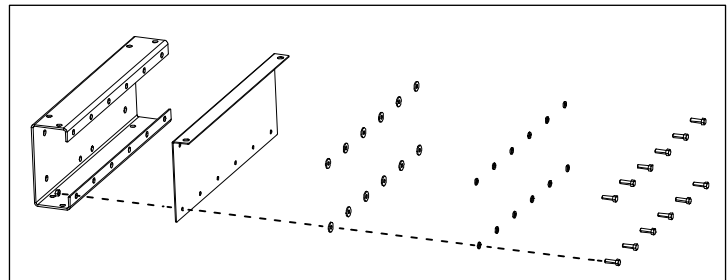
2. Attach the rear cover plate onto the front of the C-channel bracket (Figure 4). Use 3/8-16 screws with lock washers, flat washers, and nuts (twelve hardware sets).
3. Add the right and left side panels and the front cover (Figure 5). Secure using 3/8-16 screws with lock washers, flat washers, and nuts.



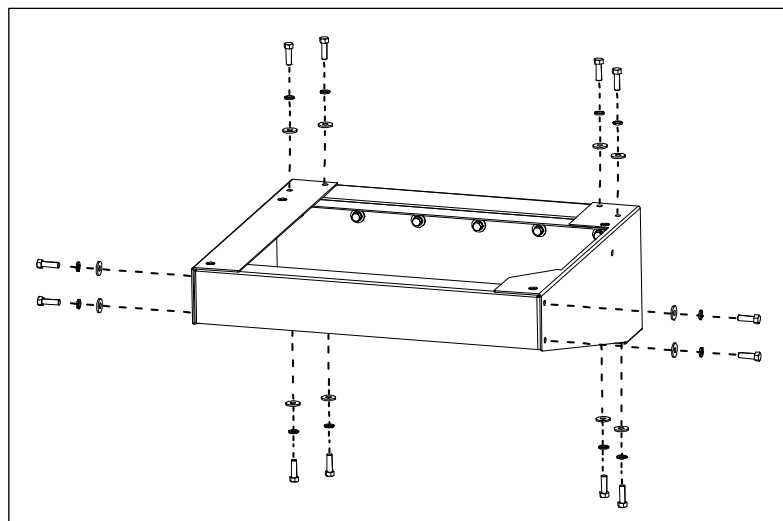
**Figure 2 Top Plate on CUBE**



**Figure 3 Attach C-channel to Wall**



**Figure 4 Attach Rear Cover Plate**



**Figure 5 Complete Lower Assembly**

**2.4.4. Mount CUBE on Lower Assembly**

See the documentation that ships with the CUBE for instructions about lifting and moving the CUBE. Follow all instructions and safety precautions.

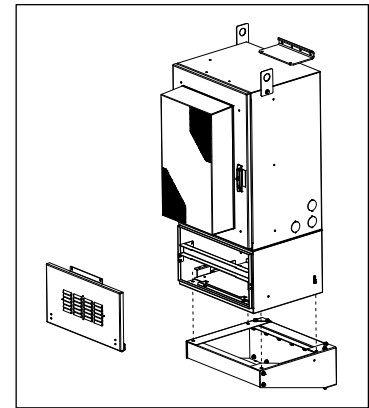
1. Remove the CUBE battery compartment cover to allow access to the CUBE mounting holes.
2. Move the CUBE onto the lower assembly (Figure 6). Secure it in place from above using 1/2-13 bolts with lock washers and flat washers, and from below using 1/2 nuts with flat washers.

If wall mounting, then this procedure is complete.

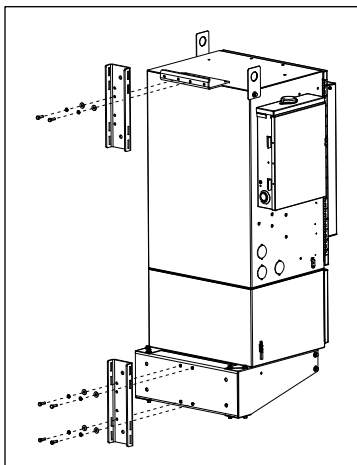
**2.4.5. Pole Mounting Only**

If pole mounting, then attach the pole mounting brackets to the back of the lower assembly and to the back of the top plate using 3/8-16 screws with lock washers, flat washers, and nuts (Figure 7).

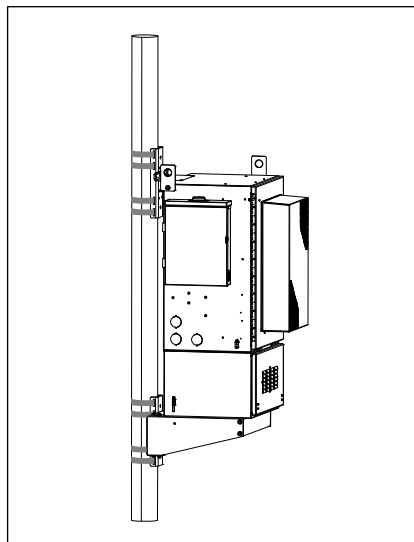
Mount the CUBE and kit assembly to the pole using either straps (Figure 8) or carriage bolts with washers and nuts (Figure 9).



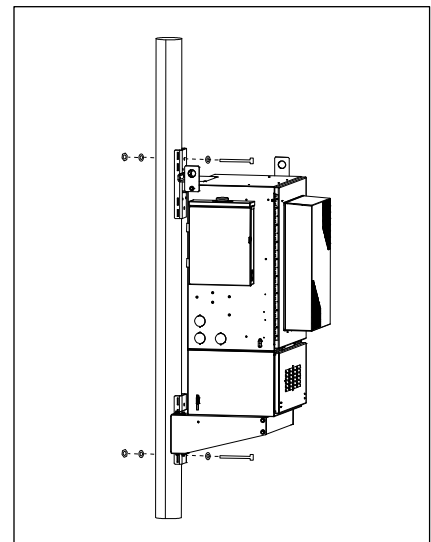
**Figure 6  
Mount CUBE Onto Lower Assembly**



**Figure 7  
Pole Mount Brackets**



**Figure 8 Strap Mount to Pole**



**Figure 9 Bolt Mount to Pole**

### 3. TECHNICAL ASSISTANCE AND REPAIR SERVICE

For questions on product repair or if technical assistance is required, contact Charles Technical Support.

847-806-8500

[techserv@charlesindustries.com](mailto:techserv@charlesindustries.com) (email)

<http://www.charlesindustries.com/techserv.htm>

### 4. WARRANTY & CUSTOMER SERVICE

Charles Industries LLC offers a one-year warranty on the kit product. The Charles warranty is limited to the operation of the kit hardware as described in this documentation and does not cover equipment that may be integrated by a third party. The terms and conditions applicable to any specific sale of product shall be defined in the resulting sales contract. For questions on warranty or other customer service assistance, contact your Charles Customer Service Representative.

847-806-6300

[mktserv@charlesindustries.com](mailto:mktserv@charlesindustries.com) (email)

[http://www.charlesindustries.com/main/telecom\\_sales\\_support.htm](http://www.charlesindustries.com/main/telecom_sales_support.htm)

### 5. SPECIFICATIONS

Physical	
Weight	Approx. 100 lbs. as shipped
Materials	Steel
Touch-up paint	02-000290-0

**Table 1      Kit Specifications**