

Charles Mounting Kit

97-002549x-A

General Description and Installation

- 1. GENERAL INTRODUCTION1
 - 1.1. Document Purpose1
 - 1.2. Product Purpose.....1
- 2. INSTALLATION2
 - 2.1. Inspecting the Product.....2
 - 2.2. Following and Using Safety Precautions.....2
 - 2.3. Obtaining Tools and Equipment.....2
 - 2.4. Installing the Kit.....2
- 3. TECHNICAL ASSISTANCE AND REPAIR SERVICE.....4
- 4. WARRANTY & CUSTOMER SERVICE4
- 5. SPECIFICATIONS.....4

1. GENERAL INTRODUCTION

1.1. Document Purpose

This document provides general information for the 97-002549x-A mounting kit for the Charles Industries’ SH52-48xxxx series. Figure 1 shows the kit components. Hardware is not pictured.

-NOTE-

Hereafter, the Charles 97-002549x-A mounting kit will be referred to as the kit. The SH52-48xxxx series enclosure will be referred to as the “SHRD52.”

1.2. Product Purpose

The kit includes a vertical mounting bracket that can be mounted onto a pole using either carriage bolts or metal straps. The horizontal brackets attach to the vertical bracket at the top and bottom. The shroud hanging brackets attach to the rear of the SHRD52. Mount the SHRD52 onto the kit assembly.

Vertical bracket dimensions are shown in Figure 2.

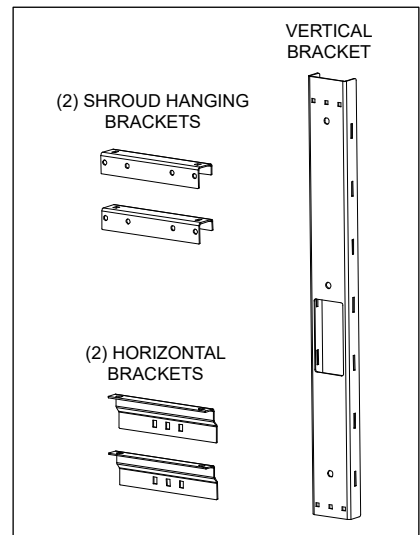


Figure 1 Kit Components

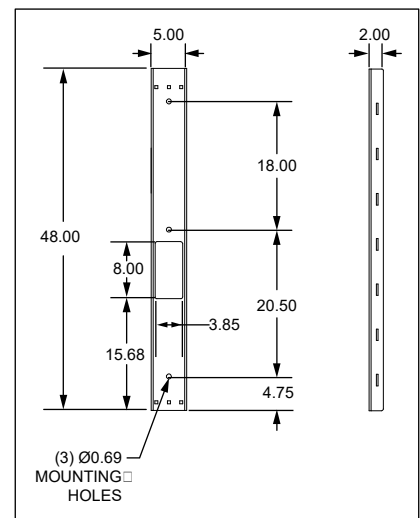


Figure 2 Vertical Bracket Dimensions

2. INSTALLATION

2.1. Inspecting the Product

The kit is shipped in a carton. Unpack the unit and dispose of the packaging material.

-INSPECTION NOTE-

Visually inspect the unit for damages prior to installation. If the equipment was damaged in transit, immediately report the extent of the damage to the transportation company.

2.2. Following and Using Safety Precautions

Read the following site and safety tips, cautions, and warnings, then proceed with the paragraphs that follow.

- Read all instructions, warnings and cautions on the equipment and in the documentation shipped with the product.
- Do not place this product on weak or unstable surfaces which may allow the product to fall, resulting in potentially serious damage(s) to persons or product.
- Only authorized trained personnel shall install the kit.

2.3. Obtaining Tools and Equipment

Obtain the following recommended or needed items for installing the kit.

- Protective and/or insulated work gloves
- Safety glasses
- Marking utensil
- Tape measure
- Slotted, hex, and Phillips screwdrivers
- Torque wrench
- Can wrench (216 tool)
- Corrosion resistant mounting straps (for strap mounting) or corrosion resistant Ø1/2" carriage bolts, washers, and nuts (for bolt mounting)

Additional equipment for bolt mounting:

- Drill with 5/8" bit capable of drilling through the pole
- Wrench sized for 1/2" carriage bolts and nuts

2.4. Installing the Kit

2.4.1. Torque Requirements

Torque all hardware as shown below (unless otherwise noted). These values apply to SAE Grade 1 & 2 Low Carbon Steel, ASTM A307 Low Carbon Steel, and Stainless Steel Grade 18-8.

Thread Size	In-lbs	Ft-lbs
4-40	4±10%	
6-32	8±10%	
8-32	16±10%	
10-32	26±10%	
12-24	50±10%	
1/4-20/M6	60±5%	5±5%
5/16-18	125±5%	10.4±5%
3/8-16	180±5%	15.0±5%
1/2-13	500±2%	41.7±2%
5/8-11	1000±1%	83.3±1%

2.4.2. Assembling the Kit

While the kit is on the ground, assemble the horizontal brackets onto the vertical bracket as shown in Figure 3.

Attach the shroud hanging brackets onto the back of the SHRD52 as shown in Figure 4. Hardware is included with the kit.

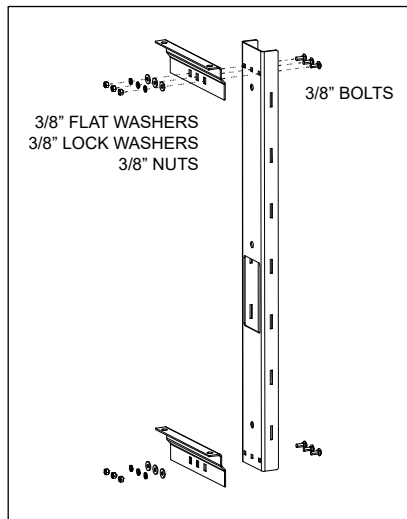


Figure 3
Attach Horizontal Brackets

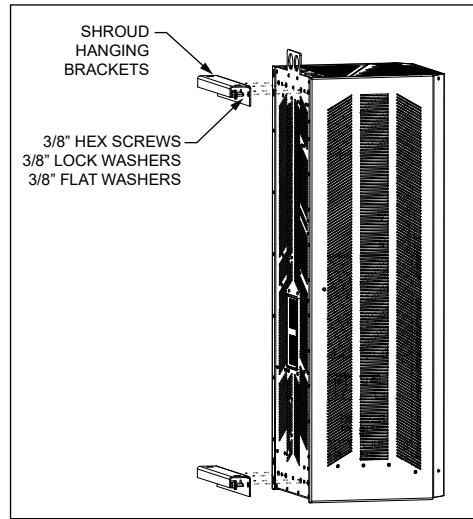


Figure 4
Attach Shroud Hanging Brackets

2.4.3. Mounting the Kit onto the Pole

Mount the kit assembly onto the pole using either carriage bolts (Figure 5) or mounting straps (Figure 6). This mounting hardware is customer supplied due to variation in pole sizes and types.

If bolt mounting, then first hold the kit assembly against the pole and mark the locations of the mounting holes. Then set the kit aside and drill the holes.

Ensure that the vertical bracket is vertically level before mounting the SHRD52.

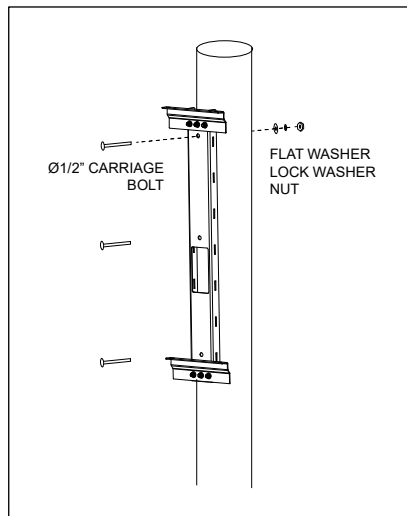


Figure 5
Bolt Mounting

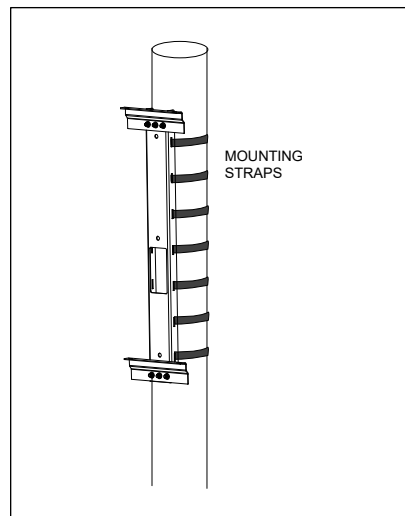


Figure 6
Strap Mounting

2.4.4. Mounting the SHRD52

Use 3/8" screws with flat washers and lock washers (included with the kit) to secure the shroud hanging brackets to the horizontal brackets (Figure 7).

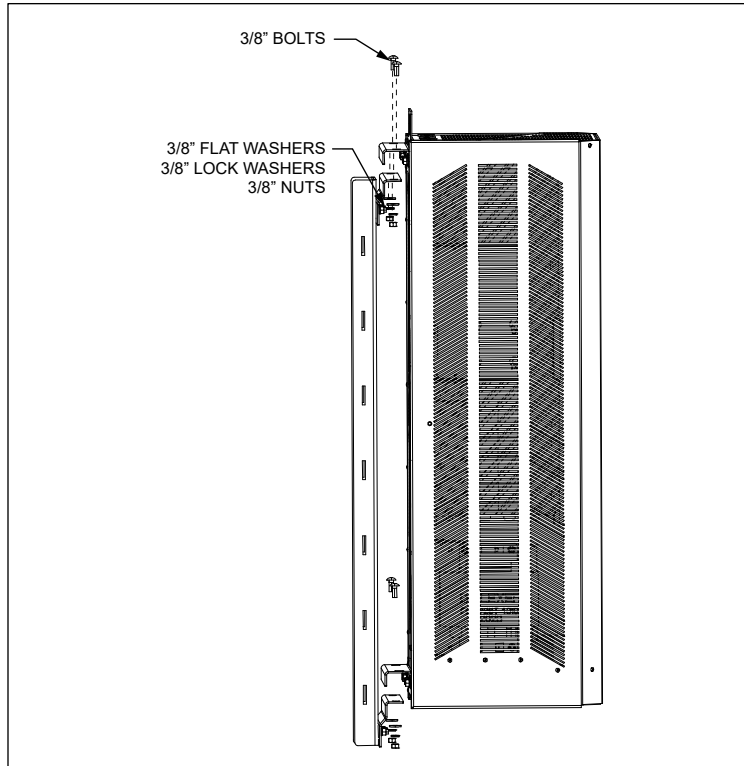


Figure 7 Mount the SHRD52

3. TECHNICAL ASSISTANCE AND REPAIR SERVICE

For questions on product repair or if technical assistance is required, contact Charles Technical Support.

847-806-8500
techserv@charlesindustries.com (email)
<http://www.charlesindustries.com/techserv.htm>

4. WARRANTY & CUSTOMER SERVICE

Charles Industries LLC offers a one-year warranty on the kit product. The Charles warranty is limited to the operation of the kit hardware as described in this documentation and does not cover equipment that may be integrated by a third party. The terms and conditions applicable to any specific sale of product shall be defined in the resulting sales contract. For questions on warranty or other customer service assistance, contact your Charles Customer Service Representative.

847-806-6300
mktserv@charlesindustries.com (email)
http://www.charlesindustries.com/main/telecom_sales_support.htm

5. SPECIFICATIONS

Physical	
Weight	Approx. 27 lbs. as shipped
Materials	Steel

Table 1 Kit Specifications