

# Mounting Kits for SHRD60 on a Square Pole

## 97-002602x-A

### General Description and Installation

<b>1. GENERAL INTRODUCTION .....</b>	<b>1</b>
1.1. Document Purpose .....	1
1.2. Product Purpose .....	1
<b>2. INSTALLATION .....</b>	<b>2</b>
2.1. Inspecting the Product .....	2
2.2. Following and Using Safety Precautions .....	2
2.3. Obtaining Tools and Equipment .....	2
2.4. Mounting the Kit .....	2
<b>3. TECHNICAL ASSISTANCE AND REPAIR SERVICE .....</b>	<b>6</b>
<b>4. WARRANTY &amp; CUSTOMER SERVICE .....</b>	<b>6</b>
<b>5. SPECIFICATIONS .....</b>	<b>6</b>

## 1. GENERAL INTRODUCTION

### 1.1. Document Purpose

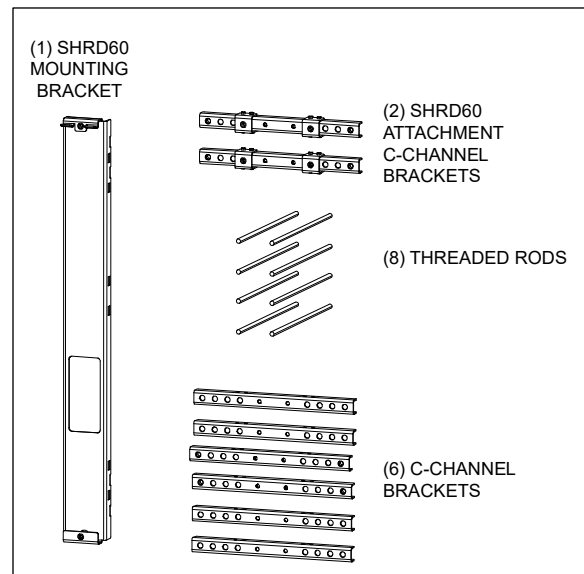
This document provides general information for the 97-002602x-A pole mounting kits for Charles Industries 50”H SHRD60 models. Figure 1 shows the kit components. Hardware is not shown.

*-NOTE-*

*Hereafter, the Charles 97-002602x-A pole mounting kit will be referred to as the “kit.” The SHRD60-503027 series radio shroud is referred to as the “SHRD60.”*

### 1.2. Product Purpose

The kit is used to mount a SHRD60 on a square pole (10.0” to 16.5” wide). The kit consists of mounting brackets, hardware to assemble the brackets, and hardware to secure the SHRD60 to the assembled kit.



**Figure 1 Kit Components**

## 2. INSTALLATION

### 2.1. Inspecting the Product

The kit is shipped inside a carton. Unpack the kit, inspect the contents, and dispose of the packaging material.

*-INSPECTION NOTE-*

*Visually inspect the unit for damages prior to installation. If the equipment was damaged in transit, immediately report the extent of the damage to the transportation company.*

### 2.2. Following and Using Safety Precautions

Read the following site and safety tips, cautions, and warnings, and then proceed with the paragraphs that follow.

- Read all instructions, warnings and cautions on the equipment and in the documentation shipped with the product.
- Only authorized trained personnel shall install the kit.

### 2.3. Obtaining Tools and Equipment

Obtain the following recommended or needed items for installing the kit.

- Hex screwdriver
- Adjustable wrench (for 1/2" and 3/8" nuts)
- Torque wrench
- Can wrench (216 tool)

### 2.4. Mounting the Kit

First the kit must be assembled and mounted onto the pole. Then the SHRD60 is mounted onto the kit.

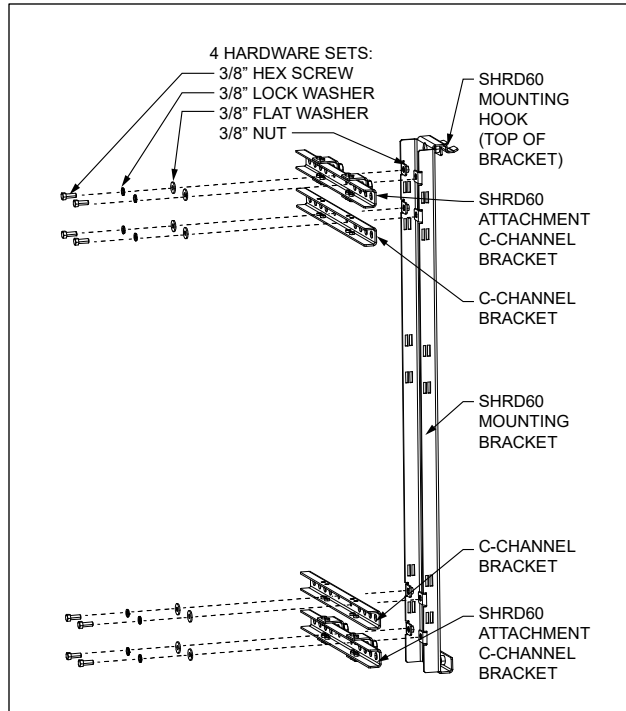
#### 2.4.1. Torque Requirements

Torque all hardware as shown below (unless otherwise noted). These values apply to SAE Grade 1 & 2 Low Carbon Steel, ASTM A307 Low Carbon Steel, and Stainless Steel Grade 18-8.

Thread Size	In-lbs	Ft-lbs
4-40	4±10%	
6-32	8±10%	
8-32	16±10%	
10-32	26±10%	
12-24	50±10%	
1/4-20/M6	60±5%	5±5%
5/16-18	125±5%	10.4±5%
3/8-16	180±5%	15.0±5%
1/2-13	500±2%	41.7±2%
5/8-11	1000±1%	83.3±1%

**2.4.2. Assemble the Kit**

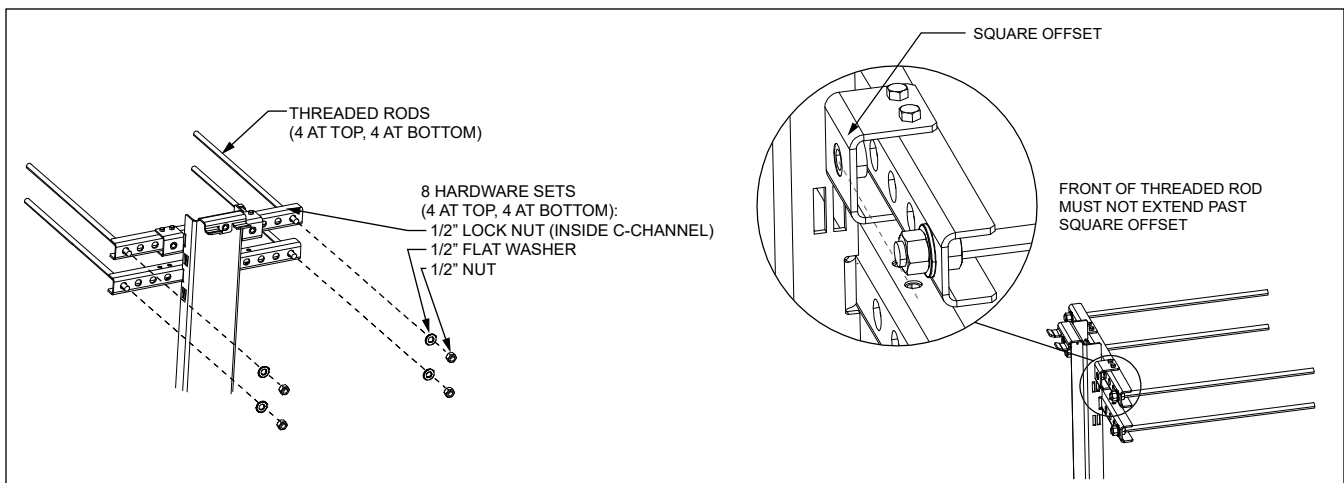
1. Locate the two SHRD60 attachment c-channel brackets and two of the c-channel brackets. Orient the SHRD60 mounting bracket so that the mounting hook is at the top, facing front. Attach the brackets onto the back of the SHRD60 mounting bracket as shown in Figure 2. Place the SHRD60 attachment c-channel brackets in the topmost and bottommost positions.



**Figure 2 Attach Front Brackets**

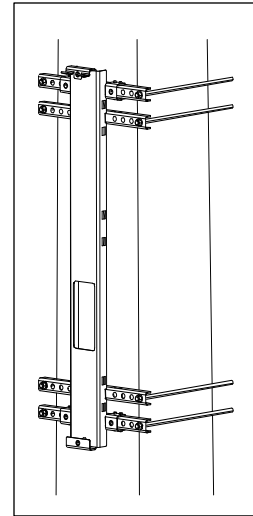
2. Add the eight threaded rods as shown in Figure 3. The SHRD60 attachment c-channel and c-channel brackets have multiple holes to insert the rods. Choose holes best suited to the size of the pole. The outermost holes are used in all images in this document.

**Note: the front ends of the threaded rods cannot extend past the square offsets on the SHRD60 attachment c-channel brackets. If they do, they will interfere with the SHRD60 mounting later.**

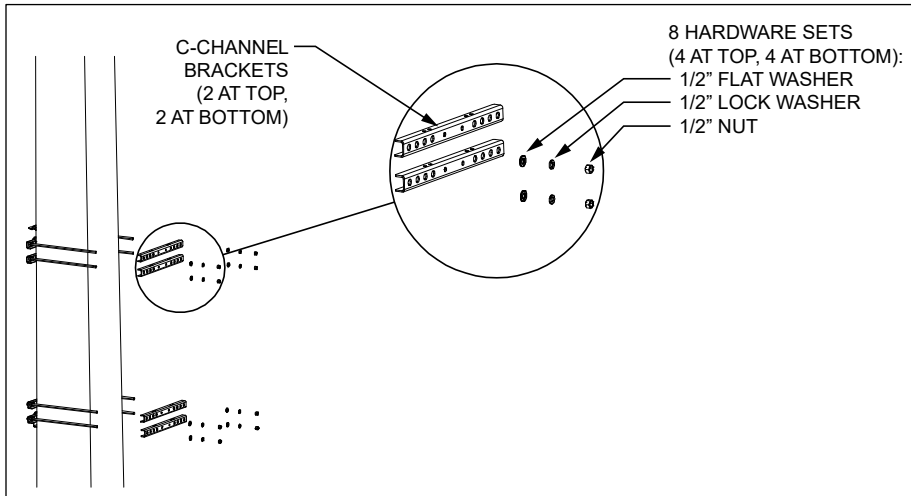


**Figure 3 Attach Threaded Rods**

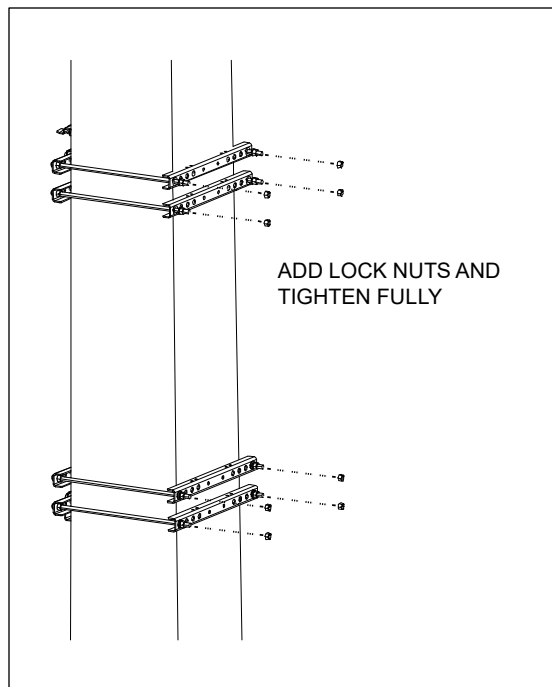
3. Position the kit assembly on the square pole (Figure 4). Hold the assembly in position. If preferred for convenience, the kit can be kept near ground level for now.
4. Attach the remaining four c-channel brackets onto the back of the threaded rods (Figure 5). Use one flat washer, lock washer and nut per threaded rod. Hardware can be left finger-tight until all four c-channel brackets are attached.
5. Raise the assembly to the height needed for mounting the SHRD60. Hold the assembly in position and tighten the hardware on the threaded rods to 24ft-lb.
6. Add a second nut to the end of each threaded rod. Hold the first nut still with a wrench and use a second wrench to fully tighten the second nut. This acts as a lock nut. If desired, extra length of the threaded rods can be cut.



**Figure 4**  
Position on Pole

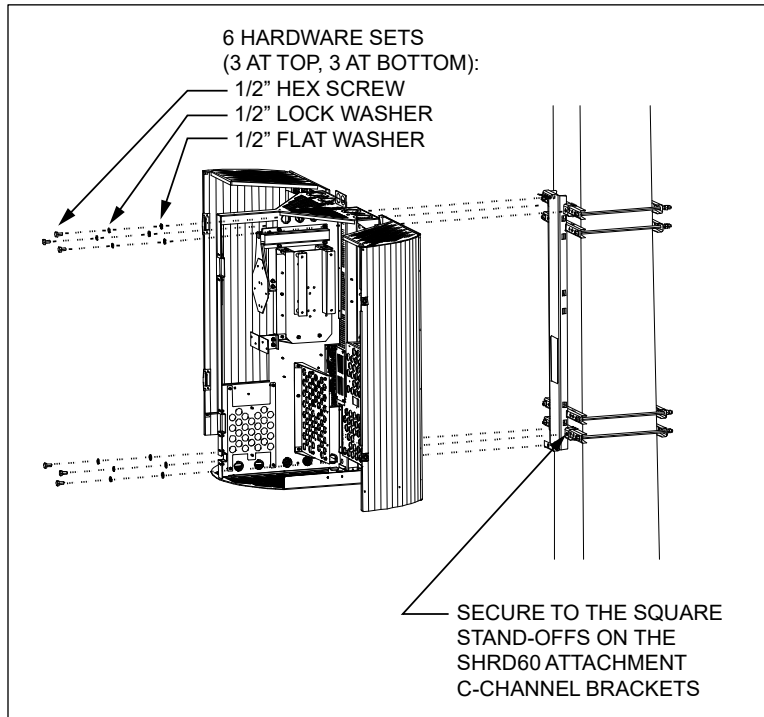


**Figure 5** Attach Rear Brackets

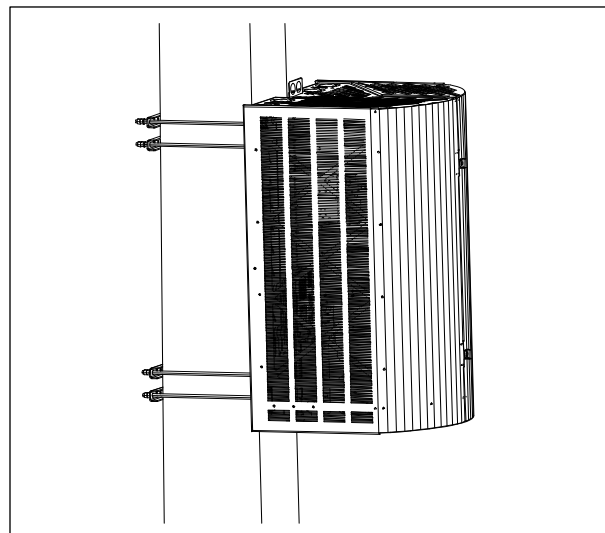


**Figure 6**  
Add Lock Nuts

7. With the kit fully assembled and positioned on the pole, Mount the SHRD60 onto the SHRD60 mounting bracket (Figure 7). The hooks at the top of the bracket fit into the slots on the rear of the SHRD60, near the top of the central spine. Secure from the inside of the SHRD60 through the mounting holes near the top and bottom of the central spine.
8. The completed installation is shown in Figure 8.



**Figure 7 Mount SHRD60**



**Figure 8 Complete Installation**

### 3. TECHNICAL ASSISTANCE AND REPAIR SERVICE

For questions on product repair or if technical assistance is required, contact Charles Technical Support.

847-806-8500  
[techserv@charlesindustries.com](mailto:techserv@charlesindustries.com) (email)  
<http://www.charlesindustries.com/techserv.htm>

### 4. WARRANTY & CUSTOMER SERVICE

Charles Industries LLC offers a one-year warranty on the kit. The Charles warranty is limited to the operation of the kit as described in this documentation and does not cover equipment that may be integrated by a third party. The terms and conditions applicable to any specific sale of product shall be defined in the resulting sales contract. For questions on warranty or other customer service assistance, contact your Charles Customer Service Representative.

847-806-6300  
[mktserv@charlesindustries.com](mailto:mktserv@charlesindustries.com) (email)  
[http://www.charlesindustries.com/main/telecom\\_sales\\_support.htm](http://www.charlesindustries.com/main/telecom_sales_support.htm)

### 5. SPECIFICATIONS

Part Number	Color	Touch-up Paint	Weight (lbs)	Compatible SHRD60 Models
97-002602A-A	Off-white	02-000290-0	46.5	SHRD60-503027 Series Radio Shrouds
97-002602D-A	Classic Texture Gray	02-000629-0		
97-002602F-A	Onyx Black	02-000611-0		
97-002602G-A	National Park Brown	02-000626-0		
97-002602H-A	Hunt Club Green	02-000599-0		
97-002602P-A	Intellectual Gray	02-000718-0		
97-002602R-A	Light Gray	02-000736-0		
97-002602W-A	Dark Bronze	02-000740-0		

Table 1 Kit Part Numbers