



Amphenol Charles Industries Fiber to the Home (FTTH) Solutions

Amphenol Charles Industries (ACI) Fiber to the Home Solutions play a pivotal role in safeguarding fiber optic infrastructure of major North American wireline and wireless service providers, along with a significant portion of Independent Telephone Company, CLEC, and MSO networks.

Renowned for our commitment to excellence, ACI is distinguished by top-tier products and unmatched support. We collaborate closely with our customers to engineer solutions that yield substantial cost savings along with superior quality. Our overarching objective revolves around empowering you, our customers, to elevate your customer service standards.

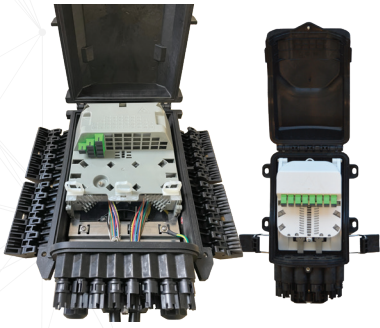
Service providers confidently rely on ACI to enhance network reliability, curtail installation and support expenditures, expedite project schedules, and deliver consistent performance over extended periods.



Splice Closure Solutions

ACI offers versatile, protective housing solutions for Aerial Fiber

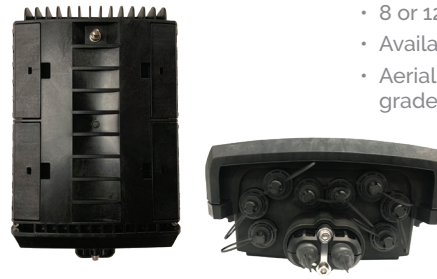
Fiber Sealed Drop Closures (FSDC)



- Standard SC drops
- 8 port or 16 drop case
- Available with PLC splitters
- Aerial, pole, wall, ped, below grade use



Fiber Sealed Drop Closure for Hardened Cables (FSDC-H)



- OptiTap compatible ports
- 8 or 12 port case
- Available with PLC splitters
- Aerial, pole, wall, ped, below grade use



Fiber Optic Dome Closures (FODC)



- Common dome form factor
- 144, 288, 576 splice case sizes
- Aerial, pole, wall, ped, below grade use
- Single fusion and mass fusion capable



Fiber Drop Repair Closures (FDRC)



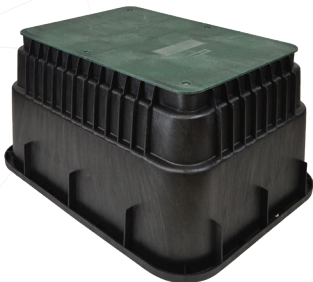
- Small 2 port drop cable closure
- Up to 12 splice
- Below grade, direct buried, wall, or aerial use



Buried Plant Solutions (Below Enclosures and Vaults)

ACI's offers high-capacity grade-level enclosures in both Light-Duty and Tier-Rated categories

Below Grade HDPE Enclosures (CBGE)



- Rated for light-duty placement, pedestrian traffic
- Lightweight, molded polyethylene hand-holes
- Available in four rectangular and two round sizes



Tier-Rated Underground Enclosures (TRUE)



- Rated for non-deliberate vehicular traffic
- Proprietary advanced composite material
- Tier 15 & 22. Lightweight and stackable



Charles Fiber Distribution Hubs

ACI's Fiber Distribution Hubs provide deployment flexibility, superior protection and intuitive fiber management

Fiber Hub Terminals (CFIT-H)



- Small to medium subscriber base
- Distribution up to 144 subscribers
- Slot for up to five splitters for incremental growth



Fiber Flexibility Pedestals (CFFP)

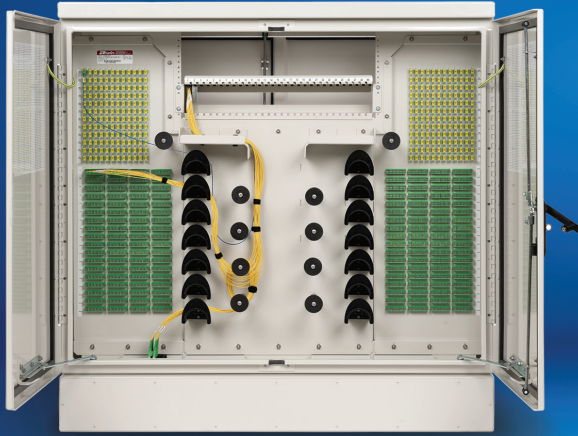


- Medium to large subscriber base
- Floodproof and can be installed in almost any location
- Available in four sizes with up to 72, 96, 144 and 288 fiber counts



Fiber Distribution Hubs (Continuation)

Optical Hub Cabinet (OHC)



- Medium to large deployments
- Intuitive fiber routing in a compact and environmentally protected fiber cabinet
- Accommodates 96, 144, 288, 432, 576 and 864 subscribers
- Can be pad, pole or vault mounted
- Multiple cable entry locations are positioned at the bottom



Optical Broadband Cabinet (OBC)



- Integrated OLT with battery chamber
- Can deliver GPON, EPON, XGS-PON and NG-PON2
- Constructed from powder-coated aluminum
- Grounding bus bar with multiple grounding studs
- Charles Fiber Splitter Modules (CFSM) are available
- Centralized split in a Passive Optical Network (PON)



Fiber Pedestals

Environmentally protected, reliable and cost-effective, ACI offers a wide range of fiber-to-the-home (FTTH) solutions



Series 3 Peds
NEW SHORTER LEAD TIMES

- Blow molded HDPE
- Square non-split base
- Available in 8" and 10" sizes



Vault Mount (Optional)

- Designed for mounting directly to below-grade enclosures (BGE)
- Improves deployment flexibility
- Vault mount base option, ships with all necessary hardware



Buried Distribution Outside Plant Pedestals (BDO)



- Easy access to branch and drop splice
- Two-piece expanded capacity "split" base
- Lift-off dome provides 360° access



Broadband Pedestals (Z01, Z02, R02, B04, B05, B06)



- Cost effective environmental housing for fiber terminals
- Available in multiple dome and base sizes
- Multiple stake and bracket options



Fiber Pedestals (Continuation)

Charles Multipurpose Housings (CMPH)



- Cost effective fiber splicing option vs. vaults
- Ease of use and servicing
- Copper options available



Charles Fiber Distribution Point Pedestals (CFDP)



- Medium to large deployments
- Lift-off outer dome with self-locking mechanism
- Inner doors for max protection
- Expanded-capacity base increases stability in all soil types



Vented Broadband Pedestals (Z05/Z06, Z08, Z14)



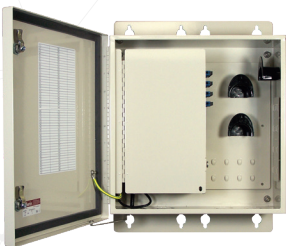
- Thermally optimized housings for DPUs, OLTs, & active RF devices
- Vertical & horizontal profiles
- Various equipment mounting options



Outdoor & Indoor Network Terminal

ACI delivers field-proven solutions for end-to-end, fiber-to-the-home (FTTH) and fiber-to-the-premises (FTTP) enclosure solutions

Fiber Interconnect Terminals (CFIT)



- CFIT serves up to 192 subscribers
- Splice tray basket (standard or hinged) available on feed and/or drop side
- Constructed of powder-coated aluminum



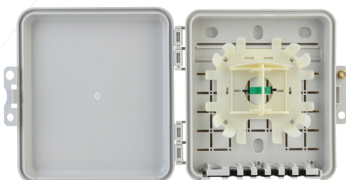
Flexible Fiber Terminals (CFIT-Flex)



- Wall, pole or pedestal mounted
- Constructed of lightweight and rugged polycarbonate
- Serves up to 48 subscribers



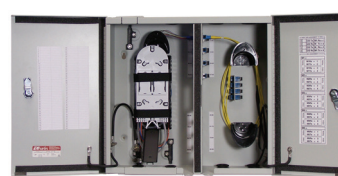
Infinity Premises Enclosure (IPE)



- For low-density fiber circuits
- Supports fiber demarcation and slack applications
- 1 to 8 Port models are available



Fiber Building Terminals (CFBT)



- Constructed out of powder-coated aluminum
- Subscribers can be added incrementally for grow-as-you-go scalability
- Up to 192 fiber connectors and/or 432 fiber splices



Accessories

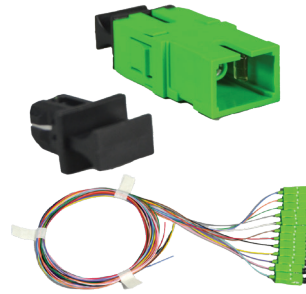
Riser Pipes and Wire Guard



- Lightweight, UV stabilized PVC
- Smooth inside surface finish prevents cable snags
- Prevents service calls



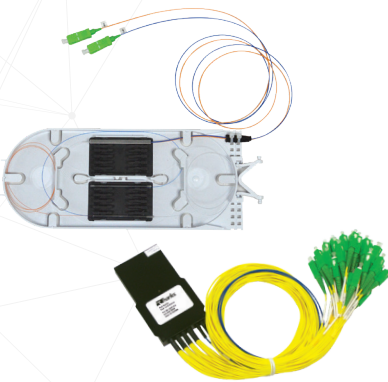
Optical Components and Accessories



- Pigtails
- Jumpers
- Fanouts
- WDM Modules



Optical Splitters and Taps



- Operating wavelength of 1260-1650 nm
- GR-1221-CORE and GR-1209-CORE compliant
- Splitter modules fits in CFFP, CFIT, CFBT, and OHC
- Splitter and Optical tap trays for BDO, CFDP, CFIT, & FSDC



Splice Trays



- Splice Trays available in 3 sizes



Federal Funded Broadband Programs

As a telecom provider working with government funding such as RDOF (Rural Digital Opportunity Fund) or BEAD (Broadband Equity, Access, and Deployment), Amphenol Charles Industries (ACI) is uniquely positioned to partner with you. ACI has been providing high-quality cost-effective broadband enclosure solutions for over 50 years, and we're ready to help your organization roll out infrastructure projects to improve broadband access across rural and underserved areas across the country.

Further, ACI offers a wide range of FTTX enclosure solutions compliant with the Build America, Buy America Act (BABA). With several manufacturing facilities located in the US, working with ACI ensures hassle-free sourcing of FTTX solutions that are compliant with BABA requirements.

If you are working with or seeking BEAD, RDOF, or other government subsidized programs, please get in touch with one of our support specialists to learn more about our offerings and how we can help you get your project completed on time and on budget.



About Amphenol Charles Industries

Founded in 1968, Amphenol Charles Industries is a manufacturing and technology company based in Schaumburg, Illinois, with North American manufacturing centers in the US and Mexico. For over 55 years, we have offered a comprehensive line of active, passive, metallic, and non-metallic environmental enclosure solutions for communications and power distribution applications serving the Wireless, Telecommunications, Broadband cable, Utility, EV Charging, and Edge Compute markets worldwide.

In April 2019, Charles was acquired by Amphenol Corporation, a world leader in antenna, optics, and interconnect solutions, with over 140,000 employees worldwide serving 70 countries. Today, Charles operates as an Amphenol Company and is leveraging Amphenol's global resources and innovative technologies to create new, bundled solutions for our customers.

We offer the following:

- Cabinets & Enclosures
- Concealment & Pole Solutions for 4G/5G applications
- Pedestals & Housings
- Fiber Optic Solutions
- Below Grade Enclosures



Amphenol Charles Industries prides itself on our commitment to our customers with our dedicated 24-hour Technical Support, which includes the following:

- 24-Hour Technical Support
- Product Training
- Field Installation
- Training Application & Network Architecture Consulting
- System Engineering
- Product Configuration Assistance



Charles Industries, LLC
An Amphenol Company
1450 American Lane, 20th Floor
Schaumburg, IL 60173-5492 USA

P: (847) 806-6300 | Fax: (847) 806-6231
24/7 Technical Support: (847)-806-8500
W: www.charlesindustries.com
E: mktserv@charlesindustries.com

Follow us on Socials:   