

Charles Industries

CFTT8 Fiber Transition Terminal

General Description and Installation

1. GENERAL INTRODUCTION	1
1.1 Document Purpose.....	1
1.2 Product Purpose.....	1
2. PRODUCT DESCRIPTION	1
3. INSTALLATION	2
3.1 Warnings and Precautions.....	2
3.2 Mounting the CFTT8.....	2
3.3 Installing the Adapters.....	2
3.4 Routing Cable into the Unit.....	2
4. TECHNICAL ASSISTANCE AND REPAIR SERVICE	3
5. WARRANTY & CUSTOMER SERVICE	3

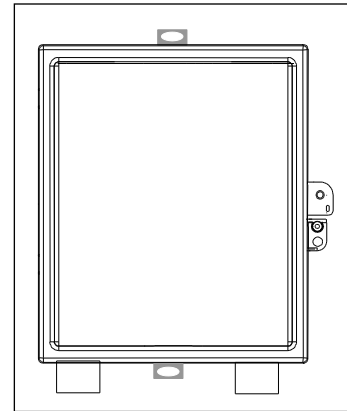


Figure 1 CFTT8 Front View

1. GENERAL INTRODUCTION

1.1 Document Purpose

This document provides installation instructions for the Charles Industries' CFTT8 fiber splicing tray. Figure 1 shows the front view of the CFTT8.

1.2 Product Purpose

The CFTT8 provides a means of managing fiber optics service cable.

2. PRODUCT DESCRIPTION

The CFTT8 enclosure houses an integrated splicing tray. Feed fiber cable enters the enclosure through an access port and then the fibers are separated in the hinged splice tray to be spliced with the drop fiber cable. The CFTT8 is available with up to eight SC/APC fiber cable adapters (specify quantity at time of ordering). Figure 2 shows the dimensions of the CFTT8.

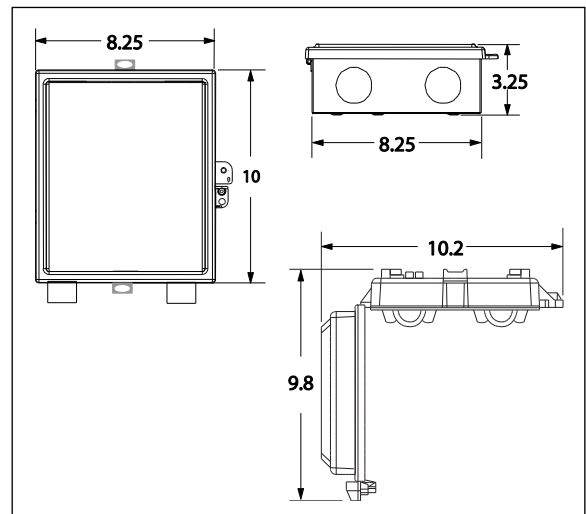


Figure 2 CFTT8 Dimensions

3. INSTALLATION

3.1 Warnings and Precautions

- Follow all national safety codes, OSHA requirements, and local environmental, workplace and company codes, safety procedures and practices.
- Only authorized trained personnel shall install the unit.

3.2 Mounting the CFTT8

Mount the enclosure according to local practice. Several mounting options are available (see Figure 3). Choose the mounting holes best suited for the mounting surface selected. Use hardware appropriate for the mounting surface.

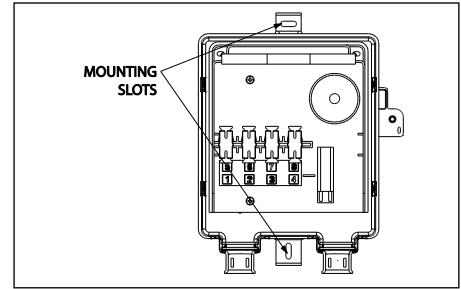


Figure 3 Mounting Options

3.3 Installing the Adapters

In some models, the adapters are installed at the factory. However, using the CFTT8-XXXXX, the adapters must be installed in the field. See Figure 4 for a diagram of how the adapters fit into the unit. Note: When installing adapters, insert two adapters into each adapter slot to eliminate unwanted shifting within the slot.

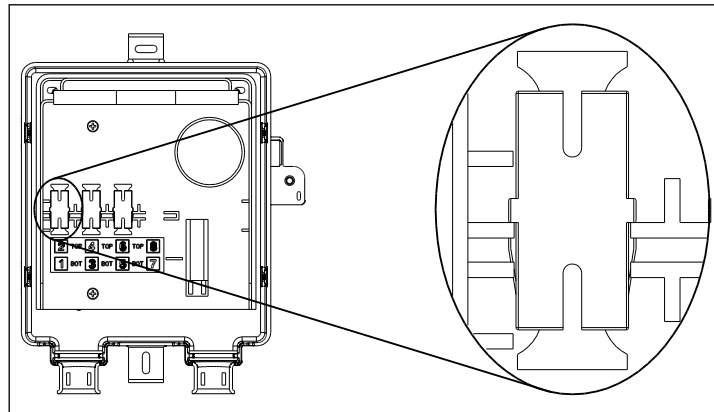


Figure 4 Adapter Installation

3.4 Routing Cable into the Unit

See Figure 5 for a diagram of the CFTT8 components. See Figure 6 for an illustration of the feed and drop cables in the splice tray.

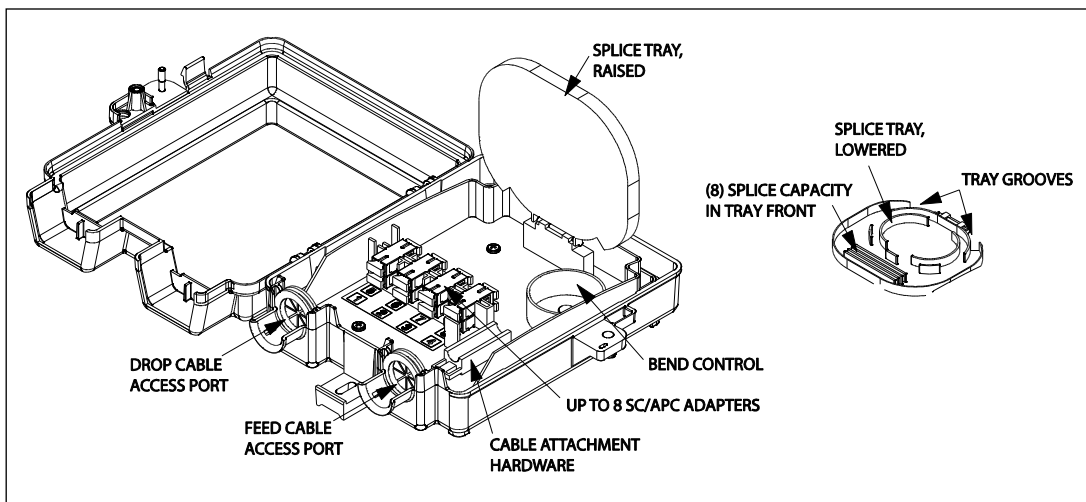


Figure 5 CFTT8 Components

Feed Cable

1. Insert the feed cable into the CFTT8 through the feed cable access port. Secure the feed cable using the cable attachment hardware provided.
2. Route fiber around the bend control components.
3. Run the feed fiber into the splice tray through one of the two grooves located at the top of the tray.
4. Route fiber in the splice tray, with the end of the feed cable reaching to the splicing area in the bottom front of the tray.

Drop Cable

1. Insert pre-connectorized drop cable (pigtail) into the CFTT8 through the drop cable access port.
2. Insert the drop cable connector to the bottom of the SC/APC adapter.
3. Insert a second length of pre-connectorized drop cable into the top of the SC/APC adapter.
4. Route the second length of drop fiber into the splice tray through the groove not chosen for the feed cable.
5. Route fiber in the splice tray, with the end of the drop cable reaching to the splicing area in the bottom front of the tray.

Splice fibers according to local practices.

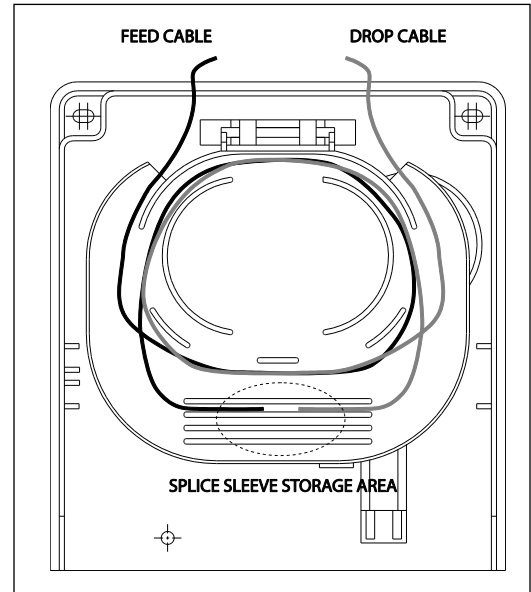


Figure 6 Cable in Splice Tray

4. TECHNICAL ASSISTANCE AND REPAIR SERVICE

For questions on product repair or if technical assistance is required, contact Charles Technical Support at:

847-806-8500
 800-607-8500
 847-806-8556 (FAX)
techserv@charlesindustries.com (email)
http://www.charlesindustries.com/main/tech_support.htm

5. WARRANTY & CUSTOMER SERVICE

Charles Industries, Ltd. offers a five-year warranty on the housing and a one-year warranty on the optical components. The Charles warranty is limited to the operation of the hardware as described in this documentation and does not cover equipment which may be integrated by a third party. The terms and conditions applicable to any specific sale of product shall be defined in the resulting sales contract. For questions on warranty or other customer service assistance, contact your Charles Customer Service Representative at:

847-806-6300
 847-806-6653 (FAX)
mktserv@charlesindustries.com (email)
http://www.charlesindustries.com/main/telecom_sales_support.htm