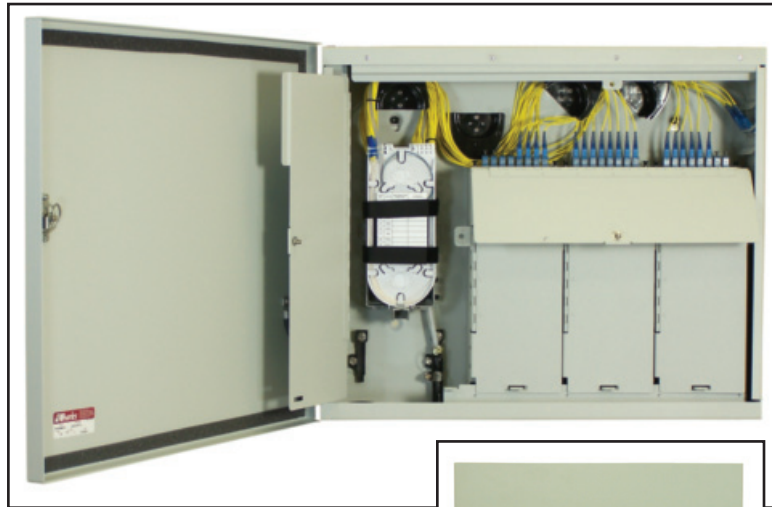


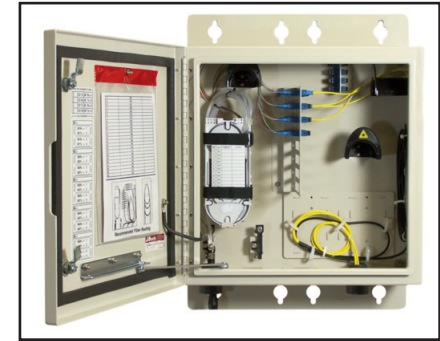
Charles CFIT & CFBT Interconnect Terminals



CFIT-D306B002/Q



CFBT-D306B002/Q



CFIT24-00B002



CFBT24-00B002



MATCODE

Description

Charles Part #

1126491	CFIT Interconnect Terminal for outdoor applications, SC/UPC connectors, 21"H x 26"W x 7.5"D, . . . splicing compartment with two fiber splice trays, interconnect compartment with 24 fiber parking lot, three customer compartments with six interconnects (pre-connectorized or pigtail splicing to one tray, not included), lockable hasps on all compartments	CFIT-D306B002/Q
1126492	20"x20"x9.5" welded aluminum housing NEMA 4 rated, wall, pole or H-Frame mountable, 24 fiber interconnect bulkhead (expandable to 48), SC/UPC adaptors, two splice trays, 8 conduit knockouts (for 1.5" and 2" conduit)	CFIT24-00B002
1126493	CFBT Interconnect Terminal for indoor applications, SC/UPC connectors, 21.5"H x 26"W x 6"D, . . . splicing compartment with two fiber splice trays, interconnect compartment with 24 fiber parking lot, three customer compartments with six interconnects (pre-connectorized or pigtail splicing to one tray, not included), lockable hasps on all compartments	CFBT-D306B002/Q
1126494	18"H x 18"W x 8"D welded aluminum housing, wall, pole or H-Frame mountable, 24 fiber interconnect bulkhead (expandable to 48), 4 position ring bulkhead, SC/UPC adaptors, two splice trays, 8 conduit knockouts (for 1.5" and 2" diameter conduit)	CFBT24-00B002
1126495	CFIT terminal pole mounting kit	97-CABPMTKIT

LUMEN®

ORDERING GUIDE

For additional product information, please visit www.charlesindustries.com

OG-OSP020-E21

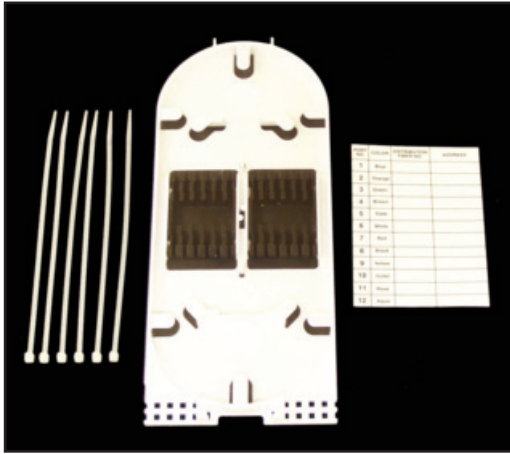
INNOVATIVE ENCLOSED SOLUTIONS™

Charles Industries, LLC
An Amphenol Company

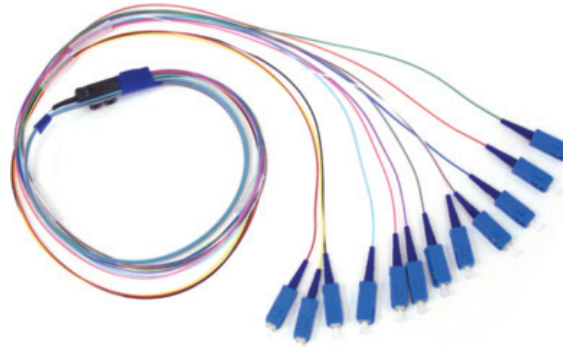
Phone: (847) 806-6300
Fax: (847) 806-6231
Web: www.charlesindustries.com



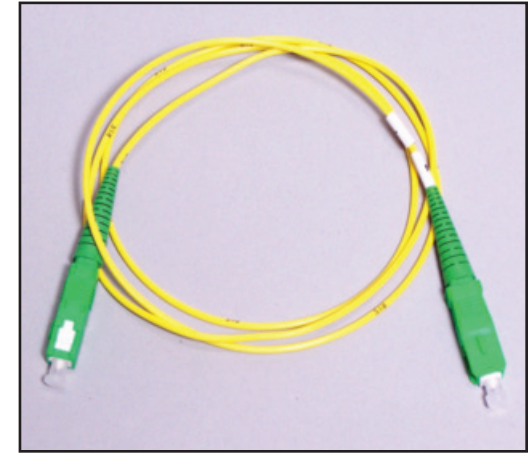
Charles CFDP Fiber Interconnect Terminals Accessories



97-FIBR24TRAY
Fiber Splice Tray, 4"x9"



97-SCU12RF3M
Ribbon Fiber Fanout



97-SCA2BI1M10J (x10)
97-SCA2BI1M25J (x25)
1 Meter Jumper

MATCODE

1122364
1120732
1120853
1122080
1122360

1122361

Description

Charles Fiber Splice Tray for 12 or 24 fibers, 4" x 9" (quantity of 1)
Ribbon Fiber Fanout w/ 12 SC/UPC connectors, 3M long (quantity of 1)
Loose Tube Fiber Fanout w/ 12 SC/UPC connectors, 3M long (quantity of 1)
Fiber Pigtail, 3MM jacketed, SC/UPC connector, 3M long (quantity of 6)
1 Meter Jumper, SC/APC connectors at both ends, 2mm jacket, ITU-T G657 Class A
bend insensitive fiber, Kit of 10 Jumpers
1 Meter Jumper, SC/APC connectors at both ends, 2mm jacket, ITU-T G657 Class A
bend insensitive fiber, Kit of 25 Jumpers

Charles Part #

97-FIBR24TRAY
97-SCU12RF3M
97-SCU12LF3M
97-SCUPC06PT
97-SCA2BI1M10J

97-SCA2BI1M25J

LUMEN[®]

ORDERING GUIDE

For additional product information,
please visit
www.charlesindustries.com

OG-OSP020-E21



INNOVATIVE ENCLOSED SOLUTIONS™

Charles Industries, LLC
An Amphenol Company

Phone: (847) 806-6300
Fax: (847) 806-6231
Web: www.charlesindustries.com

