

# Charles Concealment Shroud Solutions

Charles Industries' radio concealment shrouds offer aesthetically-pleasing concealment of radios and remote equipment at small cell, densification, and DAS remote sites. With municipalities increasingly passing ordinances for the concealment of remote equipment deployments, our attractive and functional concealment shrouds help obtain approvals, speed deployments, and protect equipment in a variety of environments.

## Pole Top Solutions



### SHRD1

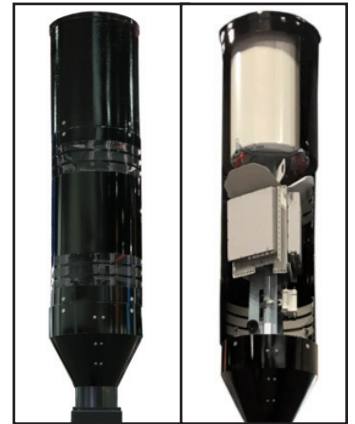
Cylindrical Small Cell pole top shroud solution for concealment of three to six low power (pico) remote radio heads from various OEMs, associated cabling, and antenna. The SHRD1 consists of a central mast with a cylindrical, vented shroud. The mast has mounting brackets for RRH units, a diplexer and a top mounting plate for a canister style antenna. A Radome antenna shroud and optional radio shroud skirt complete the concealment solution. SHRD1 are available in multiple colors to match existing poles. Optional pole mount kits are available for different pole types.

### 5G Pole Top

Cylindrical 5G Small Cell pole top shroud conceals three 5G remote radio heads from various OEMs as well as associated cabling. The open face permits mmWave 5G RF signals to pass without interference. Multiple color finishes are available to match existing poles, or color matched OEM approved 3M film can be provided for exposed radio face. Optional pole mount kits are available for different pole types.

### 4G/5G Combination Pole Top

Cylindrical pole top shrouds for combined deployments of 4G and 5G RRH provide densification.



## Mid Pole Solutions

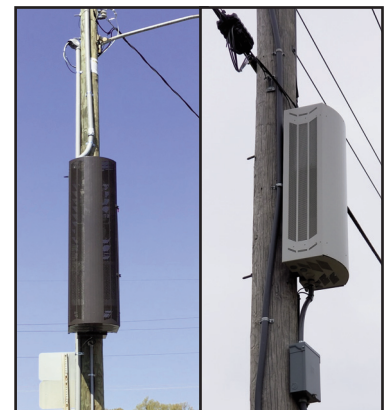


### SHRD60

Aesthetically pleasing, curved Small Cell pole mount shroud concealment solution. The curved shape matches the pole contour, eliminating right angles found in typical outside plant enclosures. Multiple sizes are available supporting low power (pico) and high power (micro) deployments. Available in multiple colors to match existing poles. Mounts to any type of pole with optional pole mounting kits. Larger sizes available for multi-carrier colocation.

### 5G Pole Mount

Discrete mid pole shroud made of durable, lightweight ABS for minimizing overall impact on pole loading. The shroud itself is adjustable to accommodate different diameter poles and includes cutout for 5G antenna face for optimum RF transmission. Optional 3M film is available to color match exposed antenna face to the pole's prime color.



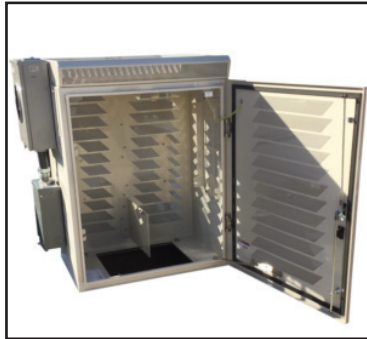
## Ground Mount Solutions

### SHRD56

Low profile Small Cell ground mount concealment solution supporting up to six low power (pico) or two high power (micro) radios, or a combination of both. All-in-one solution with integral AC load center and available meter socket. Passively cooled, eliminating noise. Available in multiple colors to match the local surroundings. May be mounted on optional Charles CPAD composite mounting pad for reduced installation cost and time.

### CNUB

Low profile ground mount power and fiber demarcation enclosure for 4G and 5G nodes. Contains integral AC load center and meter socket for incoming AC termination and also has space for an internal fiber enclosure for site fiber termination. Available in multiple colors to match the local surroundings. May be mounted on optional Charles CPAD composite mounting pad for reduced installation cost and time.



## Strand Mount



### CRSM

The CRSM bracket is designed for mounting on an aerial strand of 1/4" to 7/16" diameter. It is used for mounting radios, antennas and splitters securely in aerial wireless networks. Aluminum construction provides a light weight unit that eases installation and ensures a long lasting, rust-free product lifecycle.

## Decorative Poles



Replacement decorative poles support externally mounted radio equipment. Fully integrated poles support all radio equipment, power, and fiber residing entirely inside the pole or pole base cabinet. Available in multiple colors and styles to match existing local municipality poles.

## Side Arm Mounts



Offset antenna mount solution for placement of antenna away from the pole centerline. Concealment shroud beneath antenna masks antenna cabling. Available in multiple colors to match the existing pole. Supports a variety of antenna models. Mounting for a low power (pico) remote radio head from various OEMs inside the arm for added site concealment.

## Composite Mounting Platforms



Composite Pad (CPAD) replaces poured-in-place or pre-cast concrete and eliminates days of installation time plus the heavy equipment requirements and safety concerns of placing pre-cast concrete pads. At a fraction of the weight of concrete, CPAD provide a rigid platform for mounting enclosures that house equipment and batteries, with open space below the pad to help route RF cables and provide fiber slack storage.



INNOVATIVE ENCLOSED SOLUTIONS™



## Dependable Solutions, Superior Support

- Field-proven and unequaled 24-hour technical support
- Individualized application consultation
- Superior quality (ISO 9001/TL 9000 registered)


Visit our website at <http://www.charlesindustries.com>

Charles Industries, LLC  
An Amphenol Company

Voice: (847) 806-6300  
Fax: (847) 806-6231  
E-mail: [mktsserv@charlesindustries.com](mailto:mktsserv@charlesindustries.com)



LIT-OSP009-H20

 Charles is a registered trademark of Charles Industries, LLC