

Charles Composite Mounting Pads (CPAD)

Lightweight, low-cost alternative to poured-in-place or pre-cast concrete equipment pads



Charles Composite Pads (CPAD) are economical alternatives for poured in place and pre-cast concrete pads. They eliminate on-site work, save time, and reduce injury risk associated with handling and maneuvering heavy concrete. With today's compressed schedules to complete builds, the CPAD solution enables rapid deployment with minimal on-site project planning and coordination. Made from advanced composite materials, CPAD are extremely durable, lightweight, and simple to install. There are application specific pads for all Charles wireless and wireline cabinets. Charles has also developed a line of Universal CPADs compatible for mounting cabinets, generators, and pedestals from nearly any manufacturer. CPADs are available and suitable for a number of other outdoor equipment installations such as electric vehicle charging stations and kiosks with digital signage.

Product Benefits

- Allow for rapid placement without heavy equipment or curing time
- Enable same-day installation of pad mount enclosures and equipment
- Provide up to 50% cost savings over concrete installations
- Improve safety and reduce site injury risk compared to concrete
- Withstand greater than 150 mile winds (preventing equipment blow-over and pad displacement)
- Support up to 8,000 lbs.
- Suitable for use on incline grades up to 15%
- Non-conductive for improved safety

Common Usages



• Communications Cabinets



• Diesel Generators



• Electric Vehicle Charging Stations

Other Common Applications

- Macro Wireless Sites
- Small Cells
- Wind Farm Set-Up Generators
- Kiosks and Digital Signage

Product Specifications

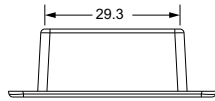
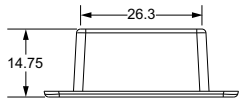
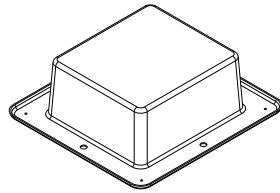
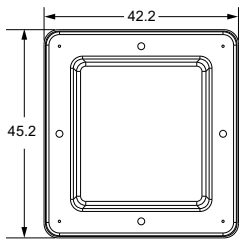
Material	Composite fiberglass polyester resin mixture	
Coating	Gel-coated UV resistant surface	
Operating Temperature	-40°F to +131°F (-40°C to +55°C)	
Pull out resistance (worse case Class 4B loose sandy soil per ASTM D-2487/2488 standard)	<u>One-Piece Models</u> 20" x 14" pad: 407 lbs. 26" x 29" pad: 1017 lbs. 34" x 24" pad: 1065 lbs. 49" x 24" pad: 1294 lbs. 73" x 24" pad: 1668 lbs.	<u>Modular Models</u> 40" x 36" pad: 1963 lbs. 40" x 36" extension: 1963 lbs. 78" x 36" pad: 2769 lbs. 78" x 36" extension: 2779 lbs.
Pullout force per anchor (worse case Class 4B loose sandy soil per ASTM D-2487/2488 standard)	200 lb. each 18" screw anchor (Typically 4 or 8 anchors used depending on bay size for 800 lb. [4 screws] or 1600 lb. [8 screws] rating)	
Equipment attachment strength Toggle anchors Weldnuts	> 3,000 lb. each > 6,000 lb. each	
Load rating	8000 lbs.	
Pull over wind resistance	> 150 mph	
Product Compliance	SCTE/ANSI-77 2013 (Impact Resistance, Flammability, Sunlight Exposure Chemical Resistance, Fire Test, Water Absorption)	

CPAD Ordering Information

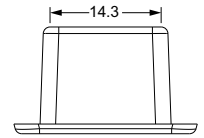
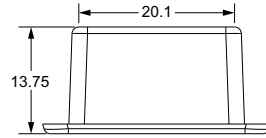
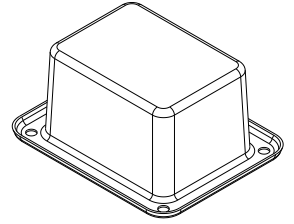
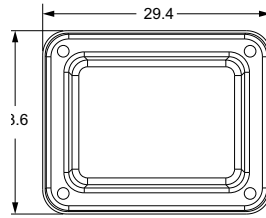
Part Number	Base Dimensions (W x D x H)	Platform Dimensions (W x D)	Weight (lbs.)	Included Toggles
CPAD-S0BUNI2014	25" x 23" x 14"	20" x 14"	25	5
CPAD-S1BUNI2629	45" x 42" x 15"	26" x 29"	42	5
CPAD-S15BUN3424	50" x 40" x 15"	34" x 24"	61	5
CPAD-S2BUNI4924	65" x 40" x 15"	49" x 24"	79	8
CPAD-S3BUNI7324	89" x 40" x 15"	73" x 24"	105	12
CPAD-M1BUNI4036	52" x 52" x 18"	40" x 36"	72	0
CPAD-M2BUNI7836	89" x 52" x 18"	78" x 36"	144	0
CPAD-M1EUNI4036	52" x 52" x 18"	40" x 36"	72	0
CPAD-M2EUNI7836	89" x 52" x 18"	78" x 36"	144	0
CPAD-STDSTAKEKT	Composite Pad Standard Stake Kit (four stakes)			
CPAD-SCRWANCRKT	Composite Pad Screw Anchor Kit (four 18" anchors)			
97-SCRWANCR26	Composite Pad Screw Anchor Kit (four 26" anchors)			
97-UNICPADZONE4	12 Piece Mounting Anchor Kit Used for Seismic Zone 4 Installations			

Numerous additional size CPADs are available for Charles' CUBE cabinets as well as other manufacturers' cabinets. Please contact Charles with your requirements.

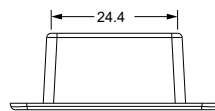
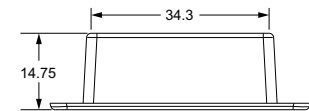
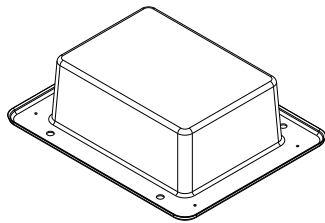
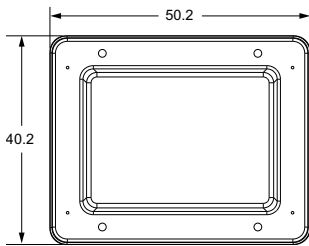
Product Dimensions — One-Piece CPAD Models



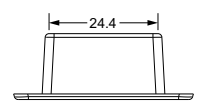
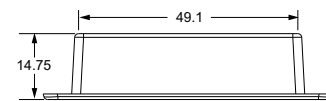
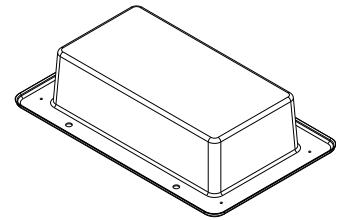
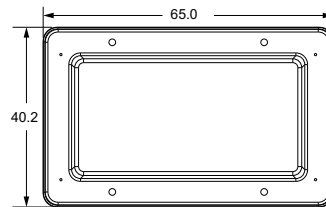
CPAD-S0BUNI2014



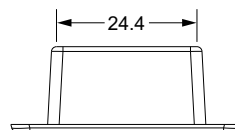
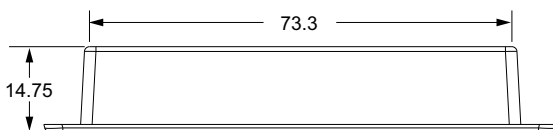
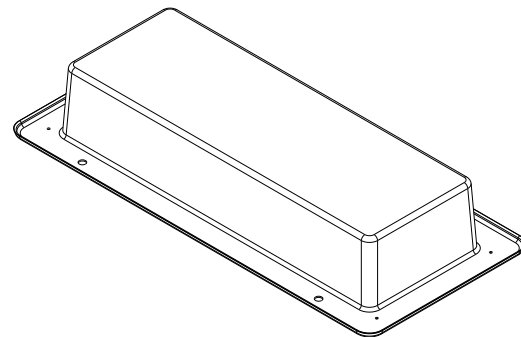
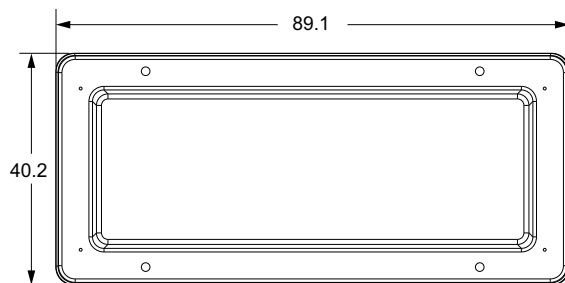
CPAD-S1BUNI2629



CPAD-S15BUN3424

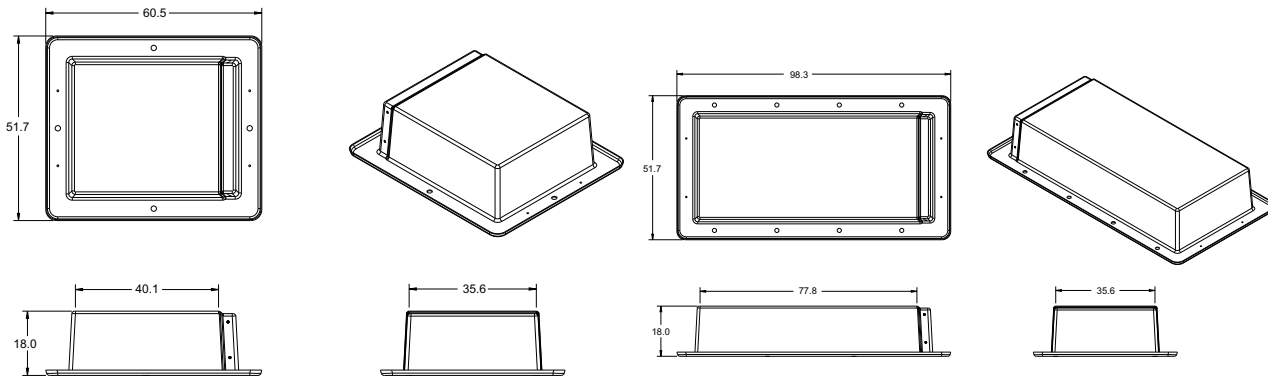


CPAD-S2BUNI4924



CPAD-S3BUNI7324

Product Dimensions — Modular CPAD Models



**CPAD-M1BUNI4036 /
CPAD-M1EUNI4036 (Extension)**

**CPAD-M2BUNI7836 /
CPAD-M2EUNI7836 (Extension)**

Simplified Installation Sequence

The pictures below illustrate a typical installation sequence for a CPAD mounting pad. For complete instructions, please refer to the specific Charles CPAD installation practice for the model being installed.



- Dig and level a hole in the ground
- Determine cable ingress/egress points, cut openings
- Place CPAD in the opening; attach toggles and anchor screws if required
- Backfill with earth
- Place and secure equipment on CPAD



INNOVATIVE ENCLOSED SOLUTIONS™



Dependable Solutions, Superior Support

- Field-proven and unequalled 24-hour technical support
- Individualized application consultation
- Superior quality (ISO 9001/TL 9000 registered)


Visit our website at <http://www.charlesindustries.com>

Charles Industries, LLC
An Amphenol Company

Voice: (847) 806-6300
Fax: (847) 806-6231
E-mail: mktserv@charlesindustries.com



D-OSP175-A20

 is a registered trademark of Charles Industries, LLC.