

# CFIT-Flex™ Standard Universal Enclosure

**Environmentally-protected enclosure designed for maximum flexibility and multiple fiber, copper or coaxial applications**

Charles' new CFIT-Flex Series of universal enclosures were designed around the principal of "flexibility." These versatile enclosures may be configured to meet a variety of fiber, copper or coaxial distribution applications. With a universal backplane and interchangeable feed and drop cable port plates, CFIT-Flex are especially efficient at meeting FTTX deployment challenges regardless of splicing technique, fiber type or the use of pre-connectorized cable.

The CFIT-Flex Standard is constructed of lightweight and rugged polycarbonate to provide long-life environmental protection. An optional fixed 72-port fiber bulkhead provides technician-friendly access to feed and drop cables without disturbing existing subscriber connections. Up to seven small hinged splice trays can be accommodated on either side of the bulkhead. Internal cable management and bend radius controls maximize cable protection. Simple to install and secure, the CFIT-Flex Standard is truly a flexible enclosure designed to ensure lower total cost of ownership in all distribution network deployments.



**CFIT-Flex with Universal Backplane for Mounting Fiber, Copper or Coaxial Equipment and Slack Cable**



**Closed View**



**Optional Fixed Fiber Bulkhead (supports up to 72 SC fiber drops)**

## Applications



**Garden Apartments**



**Low-Rise MDU**



**Mid-Rise MDU**



**High-Rise MDU**



**Cell Sites / FTTA**



**Strip Malls / FTTB**



**Campuses**

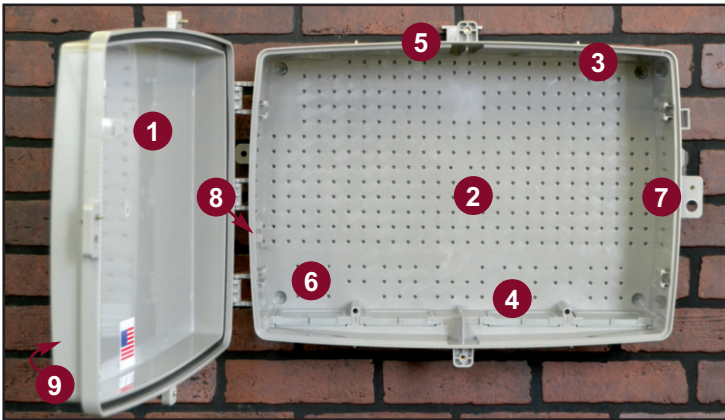
**MADE IN THE  
USA**

**Charles**



# CFIT-Flex™ Standard Product Features

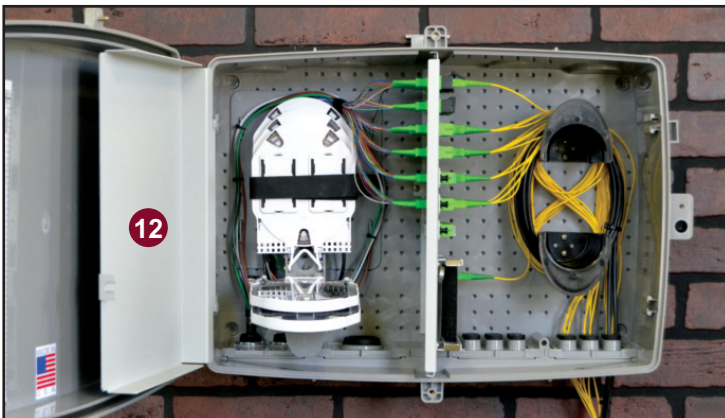
The CFIT-Flex Standard enclosure is designed to be flexibly configured to the unique requirements of any fiber optic, copper or coaxial distribution point of up to 72 subscribers. Interchangeable and easily removable parts maintain the integrity of the enclosure's environmental protection features and ensure optimal cable routing. An optional 64 Fiber Hub (SC) configuration for two 1x32 splitter modules with 12 shuttered feed adapters is available.



**CFIT-Flex Standard Enclosure with Universal Backplane**



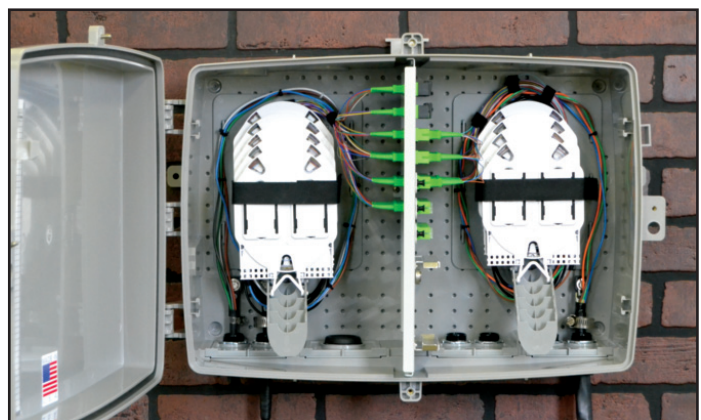
**Interchangeable Cable Port Plates & Variable Entry Grommets**



**Up to 72 Fiber Distribution with Feed Splice Basket & Trays and Drop Cable Management; optional Security Door shown**



**64 Fiber Hub with Splitter Holder and Cable Management**



**Dual Side Splice Enclosure (up to 7 Small Trays per side)**

- 1 Robust lightweight polycarbonate construction for indoor/outdoor use
- 2 Universal backplane provides ultimate flexibility to accommodate a broad range of applications
- 3 Four main top cable entry/exit drill-out ports
- 4 24 top and 12 bottom micro duct drill-out ports
- 5 Molded-in wall/pole mount brackets for bolting to wood, masonry, or drywall
- 6 Four internal corner drill-out holes for wall mounting or mating to other accessories
- 7 216-tool lockable door with three lock points and a padlock hasp for enhanced security
- 8 Provisioning for external ground(s)
- 9 Custom front label options available
- 10 Four internal snap hinge locations
- 11 Four interchangeable and removable bottom cable port plates with screw lock security feature
- 12 Optional inner security door

## Product Specifications

Dimensions: 16"H x 22"W x 8"D  
(42cm x 56cm x 20cm)

Construction: Rugged UL94-5VA  
Gray Polycarbonate

Weight: 9 lbs. (4.08kg) empty enclosure only

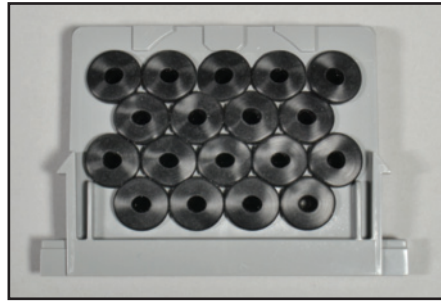
Supported Fiber Connector Types: SC, LC or MPO

Compliance: Designed to meet GR-950, GR-2898, NEMA 4, IP66

# CFIT-Flex™ Standard Interchangeable Port Plates

Each CFIT-Flex Standard enclosure features two bottom cable port locations (left and right). Each location may be equipped with any combination of the interchangeable and removable port plates types shown here.

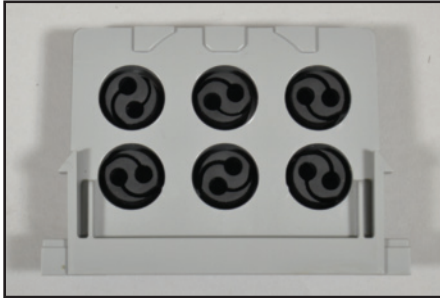
Custom port plate configurations are available, please call for details.



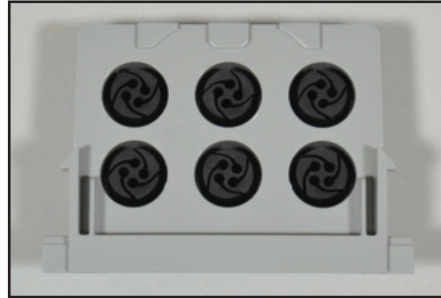
**Eighteen (18) 5mm Grommets**  
#CFIT-FC-18G5P



**Twelve (12) 5mm Grommets**  
#CFIT-FC-12G5P



**Six (6) Dual 5mm Grommets**  
#CFIT-FC-62G5P



**Six (6) Quad 2mm/3mm Grommets**  
#CFIT-FC-64G2P



**Blank Face Plate**  
#CFIT-FC-BLNKP



**Two (2) 0.75" Grommets**  
#CFIT-FC-SDGRP



**One (1) 1.00" Grommet**  
#CFIT-FC-MSGRP



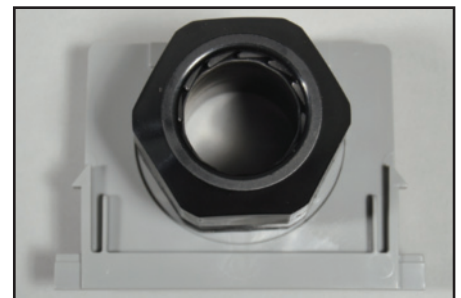
**One (1) 1.25" Grommet**  
#CFIT-FC-LSGRP



**Two (2) 0.75" Cordgrips**  
#CFIT-FC-SDCGP



**One (1) 1.00" Cordgrip**  
#CFIT-FC-MSCGP



**One (1) 1.25" Cordgrip**  
#CFIT-FC-LSCGP



**Two (2) 0.75" Conduit Fittings**  
#CFIT-FC-SDCTP



**One (1) 1.00" Conduit Fitting**  
#CFIT-FC-MSCTP



**One (1) 1.25" Conduit Fitting**  
#CFIT-FC-LSCTP



# CFIT-Flex™ Standard Ordering Information

Call (847) 806-6300 for custom configuration information.

|                                    |                                | (1)<br>Ports<br>Capacity | (2)<br>Adapter<br>/Connector<br>Type | (3)<br>Splice<br>Baskets<br>/Trays | (4)<br>Port Plate<br>#1/#2 (Left)<br>Style  | (5)<br>Port Plate<br>#3/#4 (Right)<br>Style | (6)<br>Options /<br>Custom<br>Configurations  |          |  |          |   |
|------------------------------------|--------------------------------|--------------------------|--------------------------------------|------------------------------------|---|---|---|----------|--|----------|---|
| CFIT - FS                          |                                |                          |                                      |                                    |   |   |   |          |  |          |   |
| <b>OPTION CODES</b><br>(See Below) |                                |                          |                                      |                                    |   |   |   |          |  |          |   |
| <b>00</b>                          | No<br>Fiber<br>Ports           | <b>A</b>                 | SC / APC<br>SIMPLEX                  | <b>0</b>                           | None  | <b>7</b>                                    | (1) Std. Splice Basket Plate,<br>(7) Small Hinged Splice Trays,<br>(3) Cable Brackets   | <b>A</b> | Dual Small<br>0.75" Cordgrips                                | <b>J</b> | Blank Cover<br>Plate                            |
| <b>06</b>                          | 6<br>Fiber<br>Ports            | <b>B</b>                 | SC / UPC<br>SIMPLEX                  | <b>1</b>                           | (1) Std. Splice Basket Plate,<br>(1) Small Hinged Splice Tray,<br>(1) Cable Bracket   | <b>8</b>                                    | (2) Std. Splice Basket Plates,<br>(4) Small Hinged Splice Trays,<br>(2) Cable Brackets  | <b>B</b> | Single Medium<br>1.00" Cordgrip                              | <b>K</b> | Dual Small 0.75"<br>Grommets                    |
| <b>08</b>                          | 8<br>Fiber<br>Ports            | <b>C</b>                 | LC / APC<br>DUPLEX                   | <b>2</b>                           | (1) Std. Splice Basket Plate,<br>(2) Small Hinged Splice Trays,<br>(1) Cable Bracket  | <b>9</b>                                    | (2) Std. Splice Basket Plates,<br>(6) Small Hinged Splice Trays,<br>(2) Cable Brackets  | <b>C</b> | Single Large 1.25"<br>Cordgrip (up to 24<br>5mm dia. cables) | <b>L</b> | Single Medium 1.00"<br>Grommet                  |
| <b>12</b>                          | 12<br>Fiber<br>Ports           | <b>D</b>                 | LC / UPC<br>DUPLEX                   | <b>3</b>                           | (1) Std. Splice Basket Plate,<br>(3) Small Hinged Splice Trays,<br>(1) Cable Bracket  | <b>A</b>                                    | (2) Std. Splice Basket Plates,<br>(8) Small Hinged Splice Trays,<br>(2) Cable Brackets  | <b>D</b> | 6 Quad Grommets<br>(2mm/3mm<br>dia. cables)                  | <b>M</b> | Single Large 1.25"<br>Grommet                   |
| <b>16</b>                          | 16<br>Fiber<br>Ports           | <b>E</b>                 | LC<br>MULTI-MODE<br>DUPLEX           | <b>4</b>                           | (1) Std. Splice Basket Plate,<br>(4) Small Hinged Splice Trays,<br>(2) Cable Brackets | <b>B</b>                                    | (2) Std. Splice Basket Plates,<br>(10) Small Hinged Splice<br>Trays, (4) Cable Brackets | <b>E</b> | 6 Dual Grommets<br>(5mm dia. cables)                         | <b>N</b> | Dual Small 0.75"<br>Conduit Fittings            |
| <b>24</b>                          | 24<br>Fiber<br>Ports           | <b>X</b>                 | None                                 | <b>5</b>                           | (1) Std. Splice Basket Plate,<br>(5) Small Hinged Splice Trays,<br>(2) Cable Brackets | <b>C</b>                                    | (2) Std. Splice Basket Plates,<br>(12) Small Hinged Splice<br>Trays, (4) Cable Brackets | <b>F</b> | 12 Grommets<br>(5mm dia. cables)                             | <b>P</b> | Single Medium 1.00"<br>Conduit Fitting          |
| <b>36</b>                          | 36<br>Fiber<br>Ports           |                          |                                      | <b>6</b>                           | (1) Std. Splice Basket Plate,<br>(6) Small Hinged Splice Trays,<br>(2) Cable Brackets | <b>D</b>                                    | (2) Std. Splice Basket Plates,<br>(14) Small Hinged Splice<br>Trays, (4) Cable Brackets | <b>H</b> | 18 Grommets<br>(5mm dia. cables)                             | <b>R</b> | Single Large 1.25"<br>Conduit Fitting           |
| <b>48</b>                          | 48<br>Fiber<br>Ports           |                          |                                      |                                    |   |   |   |          |  | <b>X</b> | Custom Options -<br>Refer to last<br>two digits |
| <b>64</b>                          | 64 Fiber<br>Ports<br>(Hub App) |                          |                                      |                                    |   |   |   |          |  |          |   |
| <b>72</b>                          | 72<br>Fiber<br>Ports           |                          |                                      |                                    |   |   |   |          |  |          |   |

## OPTION CODES

### INTERCONNECT OPTIONS

|           |  |           |   |
|-----------|--|-----------|---|
| <b>00</b> | None   | <b>L1</b> | (1) Std. Bulkhead,<br>12 Fiber Loose Tube Fanout*                         |
| <b>01</b> | (1) Std. Bulkhead  | <b>L2</b> | (1) Std. Bulkhead,<br>12 Fiber Loose Tube Fanout*,<br>Ground Stud         |
| <b>02</b> | (1) Std. Bulkhead,<br>Ground Stud  | <b>L3</b> | (1) Std. Bulkhead,<br>12 Fiber Loose Tube Fanout*,<br>Dual Ground Studs   |
| <b>03</b> | (1) Std. Bulkhead,<br>Dual Ground Studs                                      | <b>L4</b> | (1) Std. Bulkhead,<br>12 Fiber Loose Tube Fanout*,<br>Inner Security Door |
| <b>04</b> | (1) Std. Bulkhead,<br>(1) Inner Security Door                                | <b>R1</b> | (1) Std. Bulkhead,<br>12 Fiber Ribbon Fanout*                             |
| <b>C0</b> | (1) Std. Bulkhead,<br>(2) Cable Mgmt. Spools                                 | <b>R2</b> | (1) Std. Bulkhead,<br>12 Fiber Ribbon Fanout*,<br>Ground Stud             |
| <b>C1</b> | (1) Std. Bulkhead,<br>(2) Cable Mgmt. Spools,<br>(1) Inner Security Door     | <b>R3</b> | (1) Std. Bulkhead,<br>12 Fiber Ribbon Fanout*,<br>Dual Ground Studs       |
| <b>C4</b> | (1) Std. Bulkhead,<br>(2) Cable Mgmt. Spools,<br>12 Fiber Loose Tube Fanout* | <b>R4</b> | (1) Std. Bulkhead,<br>12 Fiber Ribbon Fanout*,<br>Inner Security Door     |

### HUB OPTIONS

|           |  |
|-----------|--|
| <b>H0</b> | (1) Std. Hub Bulkhead,<br>(1) Splitter Holder,<br>(1) Cable Mgmt. Bracket                          |
| <b>H1</b> | (1) Std. Hub Bulkhead, (1) Splitter<br>Holder, (1) Cable Mgmt. Bracket,<br>(1) Inner Security Door |
| <b>H2</b> | (1) Std. Hub Bulkhead, (1) Splitter<br>Holder, (1) Cable Mgmt. Bracket,<br>Ground Stud             |
| <b>H3</b> | (1) Std. Hub Bulkhead, (1) Splitter<br>Holder, (1) Cable Mgmt. Bracket,<br>Dual Ground Studs       |

\*Fanout quantity provided is equal  
to # of splice trays ordered.

INNOVATIVE ENCLOSED SOLUTIONS™



Charles Industries, Ltd.  
Telecommunications Group  
www.charlesindustries.com

Voice: (847) 806-6300  
Fax: (847) 806-6231  
E-mail: mktsserv@charlesindustries.com

is a registered trademark of Charles Industries, Ltd.



D-OSP161-B16