

TRUE™ Underground Enclosures with Vault Mount Square Base Pedestal Lids



For more information on TRUE Series Below Grade Enclosures, including further details on material composition and competitive advantages over polymer concrete BGE, please visit www.charlesindustries.com.

Select Charles Tier-Rated Underground Enclosures (TRUE) are available with a vault mount pedestal lid option for mounting Charles square base vault mount fiber pedestals. Vault mount pedestal lids are available for TRUE 24"x36"x24" and 30"x48"x36" sizes with a split lid design. On these models, a vault mount pedestal can be placed on the half of the split lid that features a cut-out and mounting brackets designed to accept Charles square base, vault mount pedestals. 6" and 8" diameter pedestals may be placed on the TRUE 24"x36"x24" enclosure, while 10" and 12" diameter pedestals may be placed on the TRUE 30"x48"x36" enclosure.

TRUE are constructed from advanced composite materials using a Resin Transfer Molding (RTN) process, and finished with a durable, smooth gelcoat. Unlike polymer concrete enclosures, TRUE are lightweight, easy to install and stackable.

Charles Part #	Compatible Ped Base	Description
C243624XEETHX**	6" Square Base	TRUE 24"x36"x24" with split lid for 6" Charles square base pedestals (BDO203, CFDP206)
C243624QEETHX**	8" Square Base	TRUE 24"x36"x24" with split lid for 8" Charles square base pedestals (BDO204, CFDP208, CFFP08, CFXC08)
C243624PEETHX**	10" Square Base	TRUE 24"x36"x24" with split lid for 10" Charles square base pedestals (BDO205, CFDP210, CFFP10, CFXC10)
C304836QEETHX**	8" Square Base	TRUE 30"x48"x36" with split lid for 10" Charles square base pedestals (BDO204, CFDP208, CFFP08, CFXC08)
C304836PEETHX**	10" Square Base	TRUE 30"x48"x36" with split lid for 10" Charles square base pedestals (BDO205, CFDP210, CFFP10, CFXC10)
C304836TEETHX**	12" Square Base	TRUE 30"x48"x36" with split lid for 12" Charles square base pedestals (BDO 6, CFDP12, CFFP12, CFXC12)



Optional Nameplate

**TRUE lids are available with various nameplate inserts (i.e. Fiber Optic, Communications, etc.). Please replace the two asterisks with the following two letters to specify desired nameplate:

CA = CATV
 CU = COMMUNICATIONS
 EL = ELECTRIC
 FO = FIBER OPTIC
 TE = TELEPHONE
 XX = Blank (Filler)

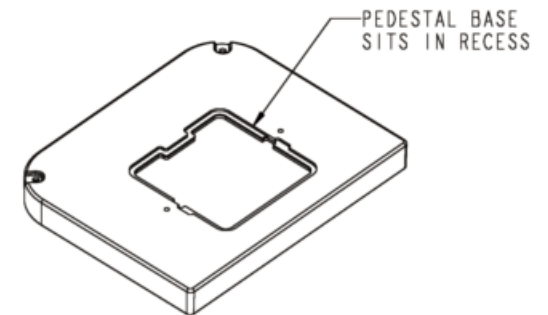
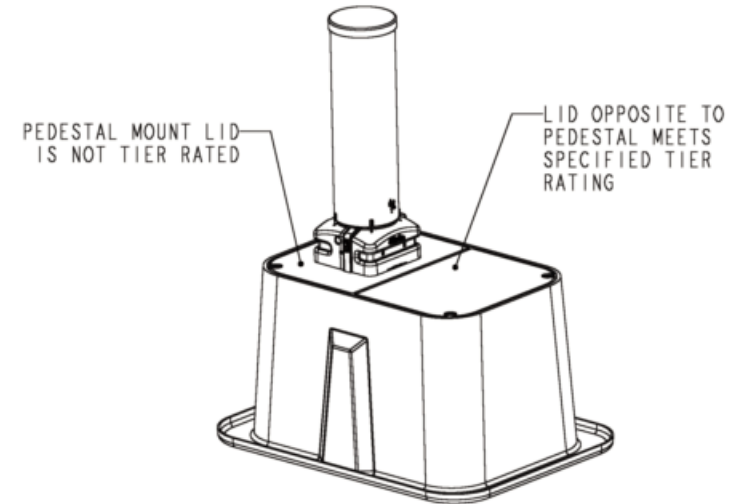
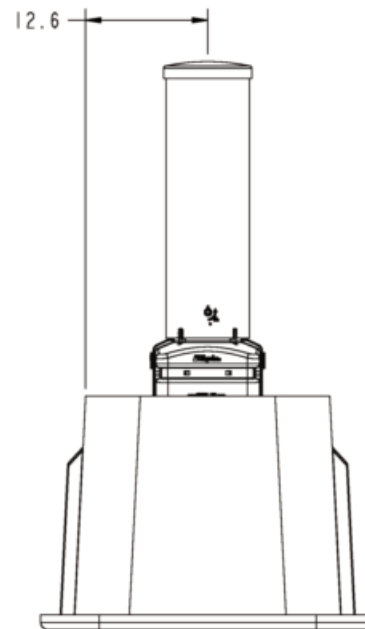
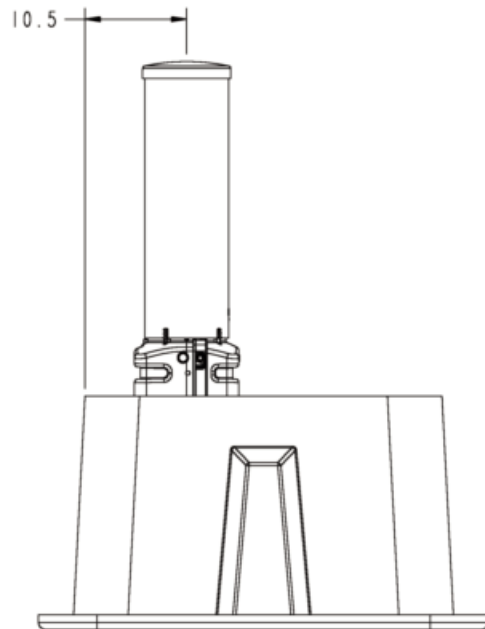


TRUE™ Underground Enclosures with Vault Mount Square Base Pedestal Lids

TRUE 24"x36"x24" Enclosure with Vault Mount Square Base Pedestal Lid

NOTES

- VAULT MOUNT HARDWARE KIT IS NOT INCLUDED WITH TRUE PRODUCT LINE. HARDWARE KITS ARE SUPPLIED WITH CHARLES PEDESTALS
- CHARLES PEDESTAL SHOWN ONLY TO SPECIFY MOUNTING LOCATION. TRUE PRODUCT WITH PEDESTAL MOUNT LID DOES NOT INCLUDE PEDESTAL
- FOR MORE INFORMATION PLEASE REFER TO TRUE 15 AND TRUE 22 SERIES DATASHEET



OG-OSP082-F17

INNOVATIVE ENCLOSED SOLUTIONS™

Charles Industries, Ltd.
5600 Apollo Drive
Rolling Meadows IL 60008

Phone: (847) 806-6300
Fax: (847) 806-6231
Web: www.charlesindustries.com

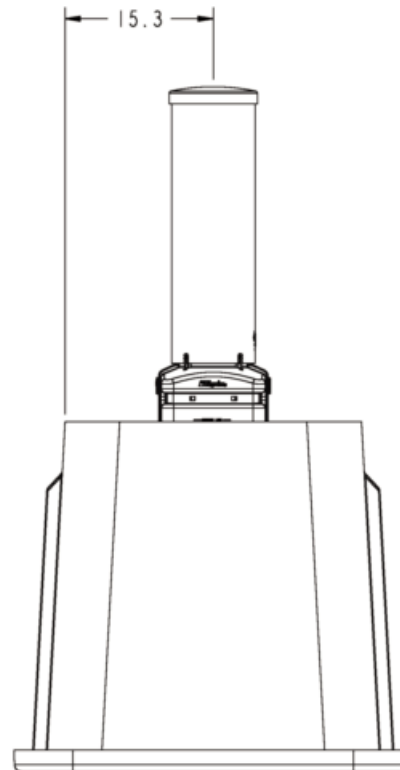
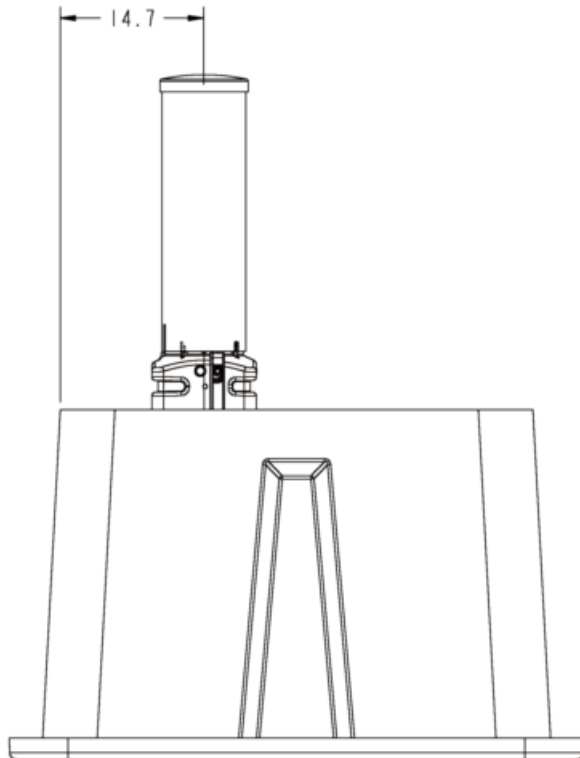


TRUE™ Underground Enclosures with Vault Mount Square Base Pedestal Lids

TRUE 30"x48"x36" Enclosure with Vault Mount Square Base Pedestal Lid

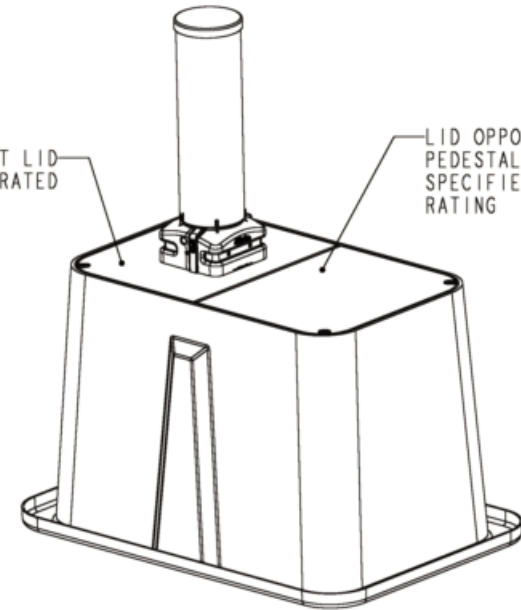
NOTES

- VAULT MOUNT HARDWARE KIT IS NOT INCLUDED WITH TRUE PRODUCT LINE. HARDWARE KITS ARE SUPPLIED WITH CHARLES PEDESTALS
- CHARLES PEDESTAL SHOWN ONLY TO SPECIFY MOUNTING LOCATION. TRUE PRODUCT WITH PEDESTAL MOUNT LID DOES NOT INCLUDE PEDESTAL

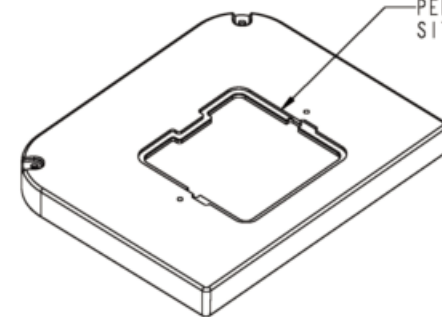


PEDESTAL MOUNT LID IS NOT TIER RATED

LID OPPOSITE TO PEDESTAL MEETS SPECIFIED TIER RATING



PEDESTAL BASE SITS IN RECESS



INNOVATIVE ENCLOSED SOLUTIONS™

Charles Industries, Ltd.
5600 Apollo Drive
Rolling Meadows IL 60008

Phone: (847) 806-6300
Fax: (847) 806-6231
Web: www.charlesindustries.com



OG-OSP082-F17