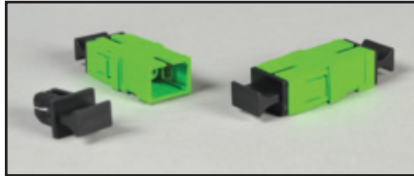


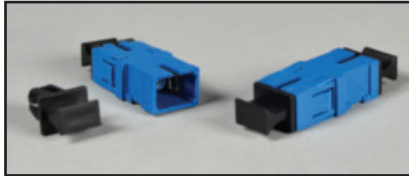
# Charles Fiber Accessories

*High quality, low-loss fiber accessories used to provide plug & play connectivity in pedestals, cabinets and enclosures*

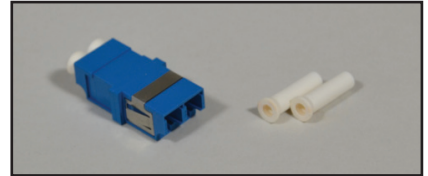
## Fiber Bulkhead Adapters



SC/APC Bulkhead Adapters



SC/UPC Bulkhead Adapters



LC/UPC Bulkhead Adapters

### SPECIFICATIONS

- Telcordia GR-326-CORE

### FIBER BULKHEAD ADAPTER KITS ORDERING INFORMATION

#### Charles Part Number   Description

KIT-SCAPC12-A	Kit, twelve (12) SC/APC bulkhead adapters, ceramic alignment ferrule, green
KIT-SCUPC12-A	Kit, twelve (12) SC/UPC bulkhead adapters, ceramic alignment ferrule, blue
KIT-LCUPC12-A	Kit, twelve (12) LC/UPC bulkhead adapters, ceramic alignment ferrule, blue

## Fiber Attenuators



SC/APC Attenuators



SC/UPC Attenuators



LC/UPC Attenuators

### SPECIFICATIONS

- Male to Female Design • RoHS Compliant • Attenuation Ranges from 1dB to 30dB available upon request

### FIBER ATTENUATOR KITS ORDERING INFORMATION

#### Charles Part Number   Description

##### **SC/APC Attenuators**

CFA-SCA-01	Kit, fifteen (15) fiber attenuators, SC/APC, 1dB, 1310 / 1550nm
CFA-SCA-03	Kit, fifteen (15) fiber attenuators, SC/APC, 3dB, 1310 / 1550nm
CFA-SCA-05	Kit, fifteen (15) fiber attenuators, SC/APC, 5dB, 1310 / 1550nm
CFA-SCA-10	Kit, fifteen (15) fiber attenuators, SC/APC, 10dB, 1310 / 1550nm

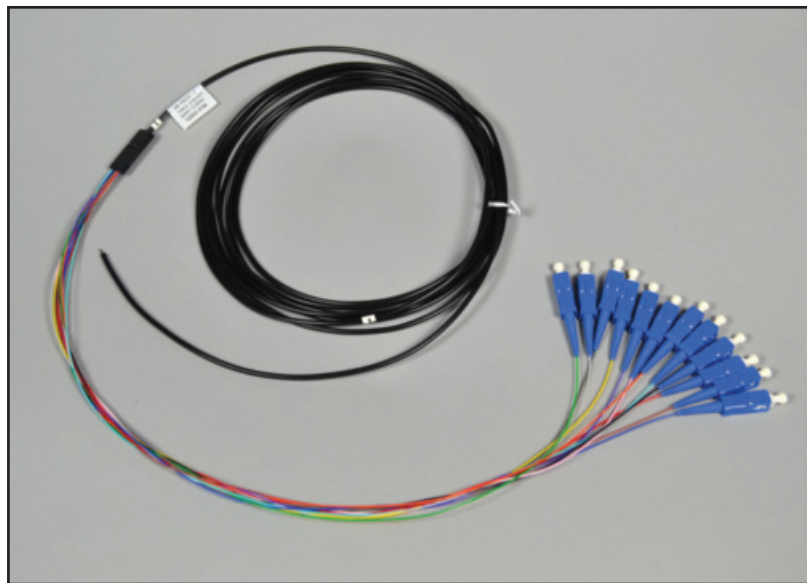
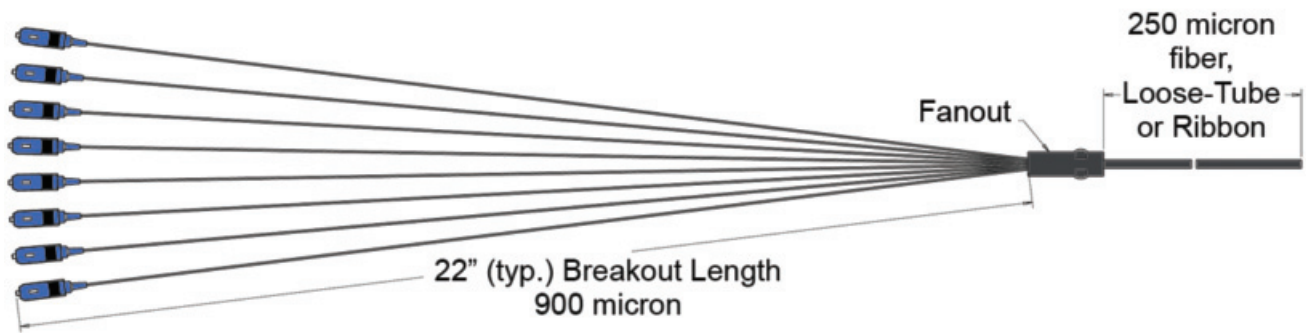
##### **SC/UPC Attenuators**

CFA-SCU-01	Kit, fifteen (15) fiber Attenuators, SC/UPC, 1dB, 1310 / 1550nm
CFA-SCU-03	Kit, fifteen (15) fiber attenuators, SC/UPC, 3dB, 1310 / 1550nm
CFA-SCU-05	Kit, fifteen (15) fiber attenuators, SC/UPC, 5dB, 1310 / 1550nm
CFA-SCU-10	Kit, fifteen (15) fiber attenuators, SC/UPC, 10dB, 1310 / 1550nm

##### **LC/UPC Attenuators**

CFA-LCU-01	Kit, fifteen (15) fiber attenuators, LC/UPC, 1dB, 1310 / 1550nm
CFA-LCU-03	Kit, fifteen (15) fiber attenuators, LC/UPC, 3dB, 1310 / 1550nm
CFA-LCU-05	Kit, fifteen (15) fiber attenuators, LC/UPC, 5dB, 1310 / 1550nm
CFA-LCU-10	Kit, fifteen (15) fiber attenuators, LC/UPC, 10dB, 1310 / 1550nm

# Fiber Fan-Out Cable Assemblies



Fanout Cable Assembly

## SPECIFICATIONS

- ITU-T G.652.D reduced water peak fiber
- Telcordia GR-20-CORE compliant fiber
- Telcordia GR-326-CORE compliant connectors
- Connector return loss: APC -65dB; UPC -55dB

## FIBER FAN-OUT CABLE ASSEMBLIES ORDERING INFORMATION

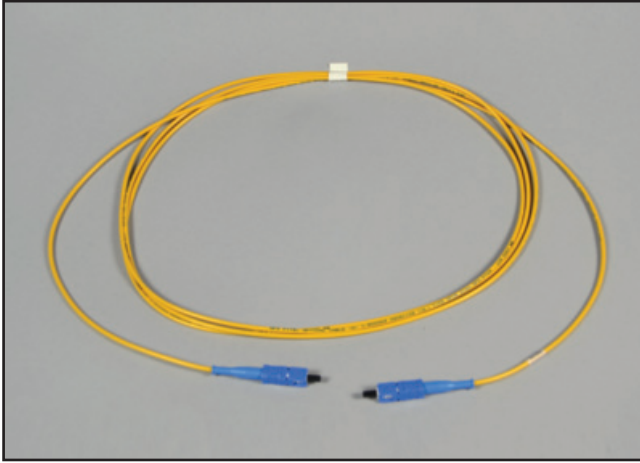
SC connectors, single-mode fiber, 900 $\mu$  color-coded buffer, 3 meters

	<b>SC/APC Loose-Tube</b>	<b>SC/UPC Loose-Tube</b>	<b>SC/APC Ribbon</b>	<b>SC/UPC Ribbon</b>
<b>12 fibers</b>	97-SCA12LF3M	97-SCU12LF3M	97-SCA12RF3M	97-SCU12RF3M
<b>8 fibers</b>	97-SCA08LF3M	97-SCU08LF3M	97-SCA08RF3M	97-SCU08RF3M
<b>6 fibers</b>	97-SCA06LF3M	97-SCU06LF3M	97-SCA06RF3M	97-SCU06RF3M

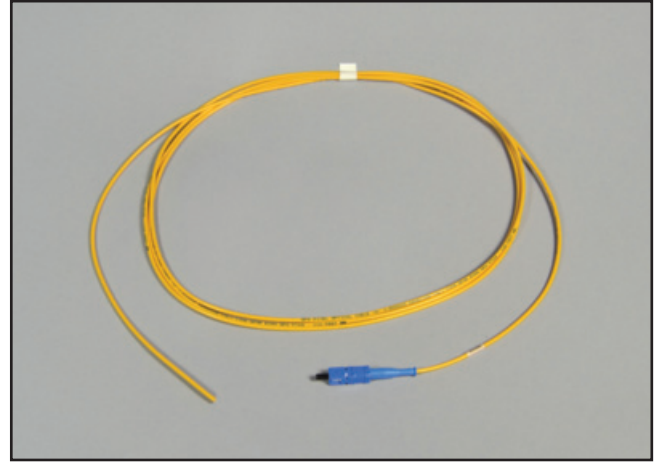
LC connectors, single-mode fiber, 900 $\mu$  color-coded buffer, 3 meters

	<b>LC/APC Loose-Tube</b>	<b>LC/UPC Loose-Tube</b>	<b>LC/APC Ribbon</b>	<b>LC/UPC Ribbon</b>
<b>12 fibers</b>	97-LCA12LF3M	97-LCU12LF3M	97-LCA12RF3M	97-LCU12RF3M
<b>8 fibers</b>	97-LCA08LF3M	97-LCU08LF3M	97-LCA08RF3M	97-LCU08RF3M
<b>6 fibers</b>	97-LCA06LF3M	97-LCU06LF3M	97-LCA06RF3M	97-LCU06RF3M

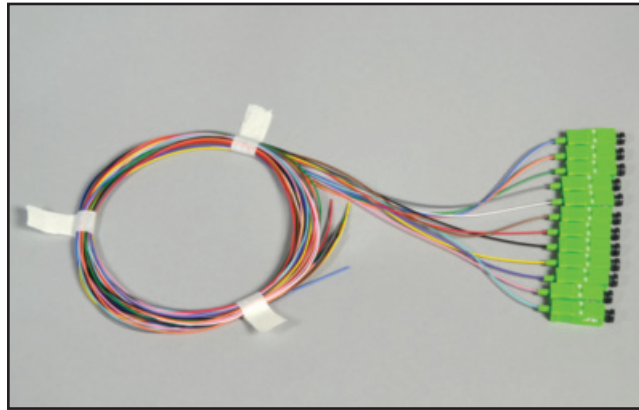
# Fiber Jumpers & Pigtails



Fiber Jumper, Simplex, 2mm Jacket



Fiber Pigtail, Simplex, 2mm Jacket



Fiber Pigtail, 900µ Color-Coded Buffer

## SPECIFICATIONS

- ITU-T G.657.A1 compliant
- Telcordia GR-20-CORE compliant fiber
- Telcordia GR-326-CORE compliant connectors
- Connector return loss: APC -65dB; UPC -55dB

## FIBER JUMPERS ORDERING INFORMATION

Single-mode 10mm bend-insensitive fiber, simplex, 2mm yellow jacket, 1 meter

Qty.	SC/APC	SC/UPC	LC/APC	LC/UPC
10 pcs.	JS-SASAM01-2BA	JS-SUSUM01-2BA	JS-LALAM01-2BA	JS-LULUM01-2BA
25 pcs.	JS-SASAM01-2BE	JS-SUSUM01-2BE	JS-LALAM01-2BE	JS-LULUM01-2BE

## FIBER PIGTAILS ORDERING INFORMATION

Single-mode, simplex, 2mm yellow jacket, 3 meters

Qty.	SC/APC	SC/UPC	LC/APC	LC/UPC
2 pcs.	PS-SABFM03-2A2	PS-SUBFM03-2A2	PS-LABFM03-2A2	PS-LUBFM03-2A2
10 pcs.	PS-SABFM03-2AA	PS-SUBFM03-2AA	PS-LABFM03-2AA	PS-LUBFM03-2AA

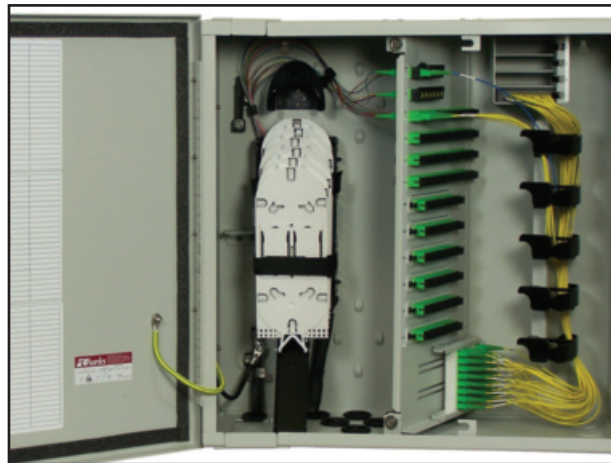
Single-mode, simplex, 900µ color-coded buffer, 3 meters

	SC/APC	SC/UPC	LC/APC	LC/UPC
<b>6 fibers</b>	PS-SABFM03-9A6	PS-SUBFM03-9A6	PS-LABFM03-9A6	PS-LUBFM03-9A6
<b>8 fibers</b>	PS-SABFM03-9A8	PS-SUBFM03-9A8	PS-LABFM03-9A8	PS-LUBFM03-9A8
<b>12 fibers</b>	PS-SABFM03-9AB	PS-SUBFM03-9AB	PS-LABFM03-9AB	PS-LUBFM03-9AB

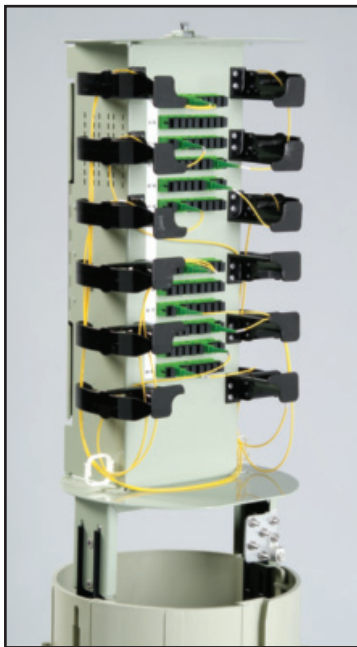
**Charles Fiber Accessories are compatible with the following product lines from Charles Industries:**



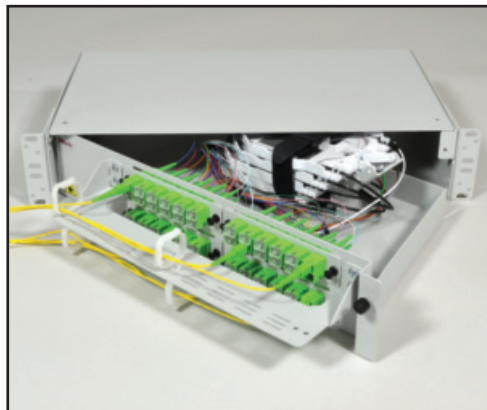
**Charles Fiber Interconnect Terminals (CFIT)**



**Charles Fiber Building Terminals (CFBT)**



**Charles Fiber Cross-Connects (CFXC)**



**Charles Fiber Rack Solutions (CFRS)**



**Charles Fiber Wall Solutions (CFWS)**

*For additional information on Charles Fiber Cabinets, Terminals, Enclosures, Distribution Pedestals, Rack Systems and Accessories, please visit [www.charlesindustries.com](http://www.charlesindustries.com) or call (847) 806-6300.*



INNOVATIVE ENCLOSED SOLUTIONS™



**Dependable Solutions, Superior Support**

- Field-proven and unequalled 24-hour technical support
- Individualized application consultation
- Superior quality (ISO 9001/TL 9000 registered)

Visit our website at <http://www.charlesindustries.com>

Charles Industries, Ltd.


Voice: (847) 806-6300

Fax: (847) 806-6231

E-mail: [mktserv@charlesindustries.com](mailto:mktserv@charlesindustries.com)



D-OSP153-K17

 is a registered trademark of Charles Industries, Ltd.